

EG8L

01

STACK LAYERS

=====

L1: TOP
L2: GND
L3: IN1
L4: VCC
L5: IN2
L6: IN3
L7: GND1
L8: BOT

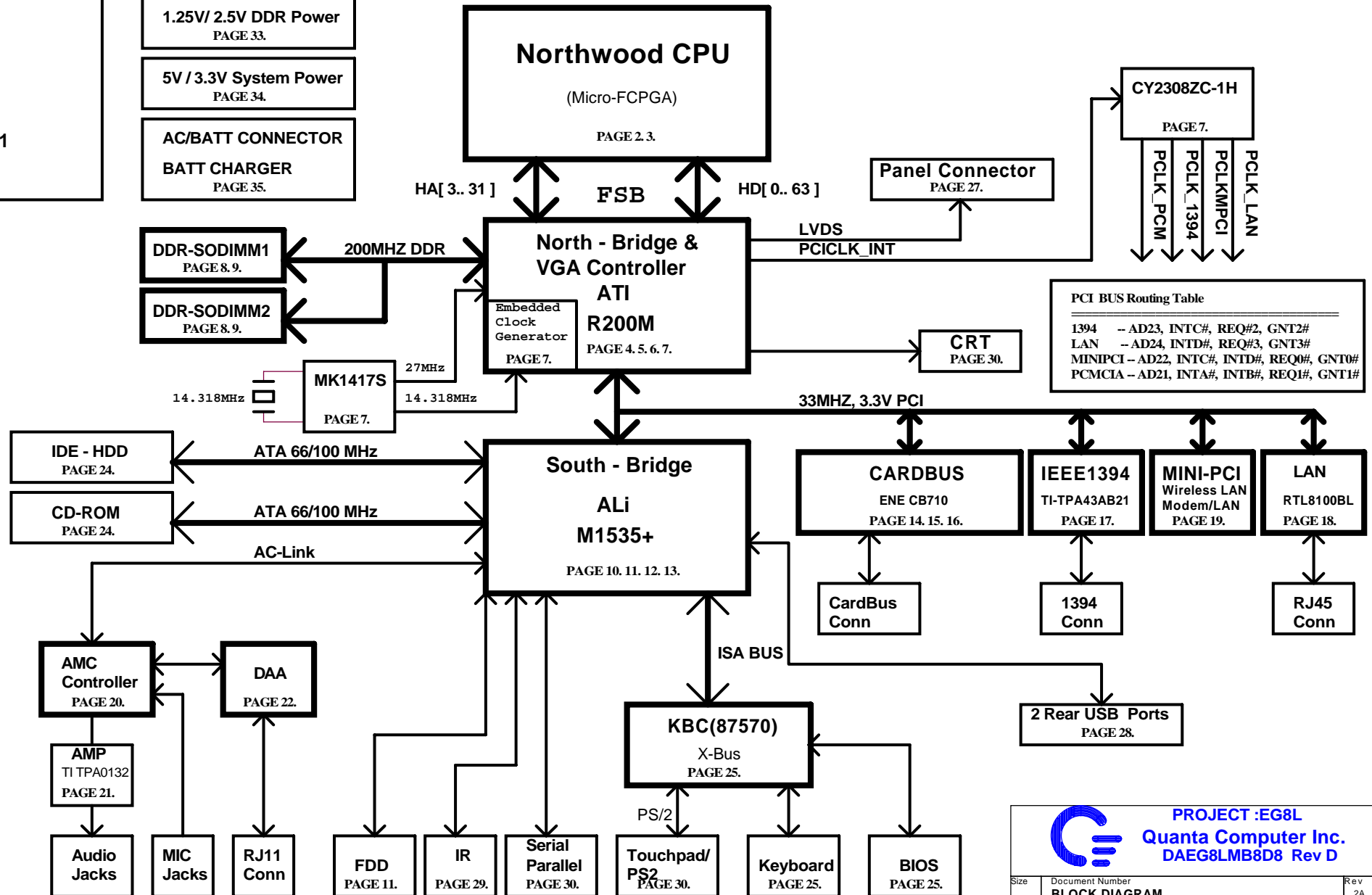
Power - Source Control

CPU CORE Power
PAGE 32.

1.25V/ 2.5V DDR Power
PAGE 33.

5V / 3.3V System Power
PAGE 34.

AC/BATT CONNECTOR
BATT CHARGER
PAGE 35.



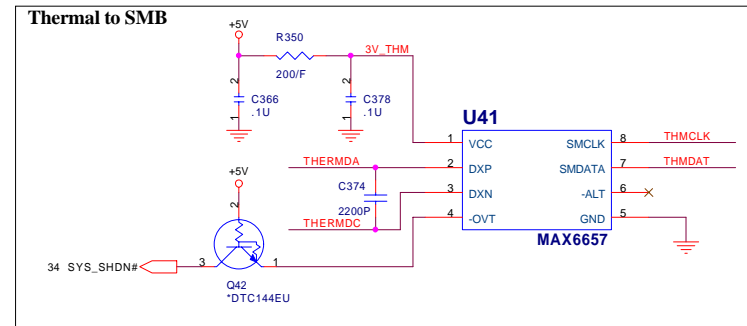
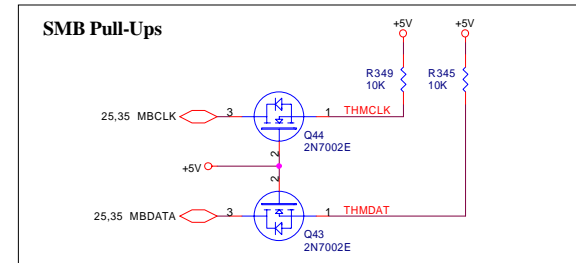
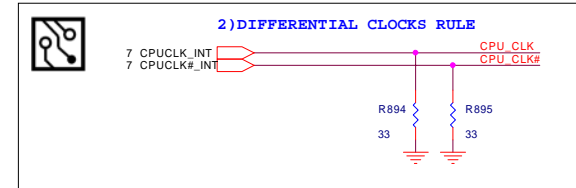
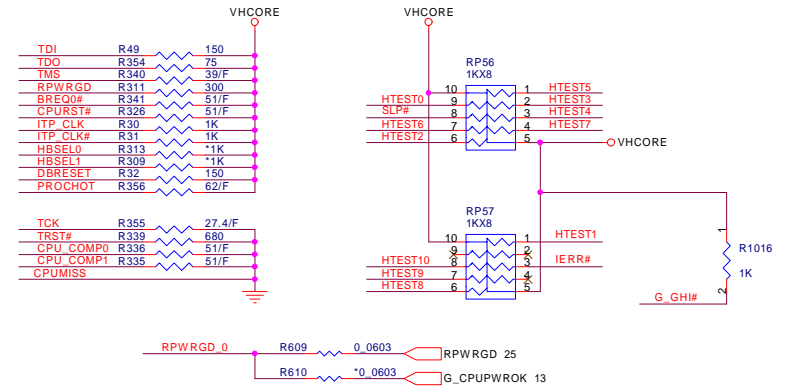
PROJECT :EG8L
Quanta Computer Inc.
DAEG8LMB8D8 Rev D

Size	Document Number	Rev
	BLOCK DIAGRAM	2A
Date: Friday, December 27, 2002	Sheet 1 of 36	

INTEL CPU Northwood - 1 (Host Bus)

02

U10A

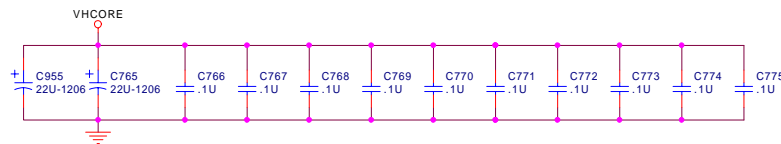
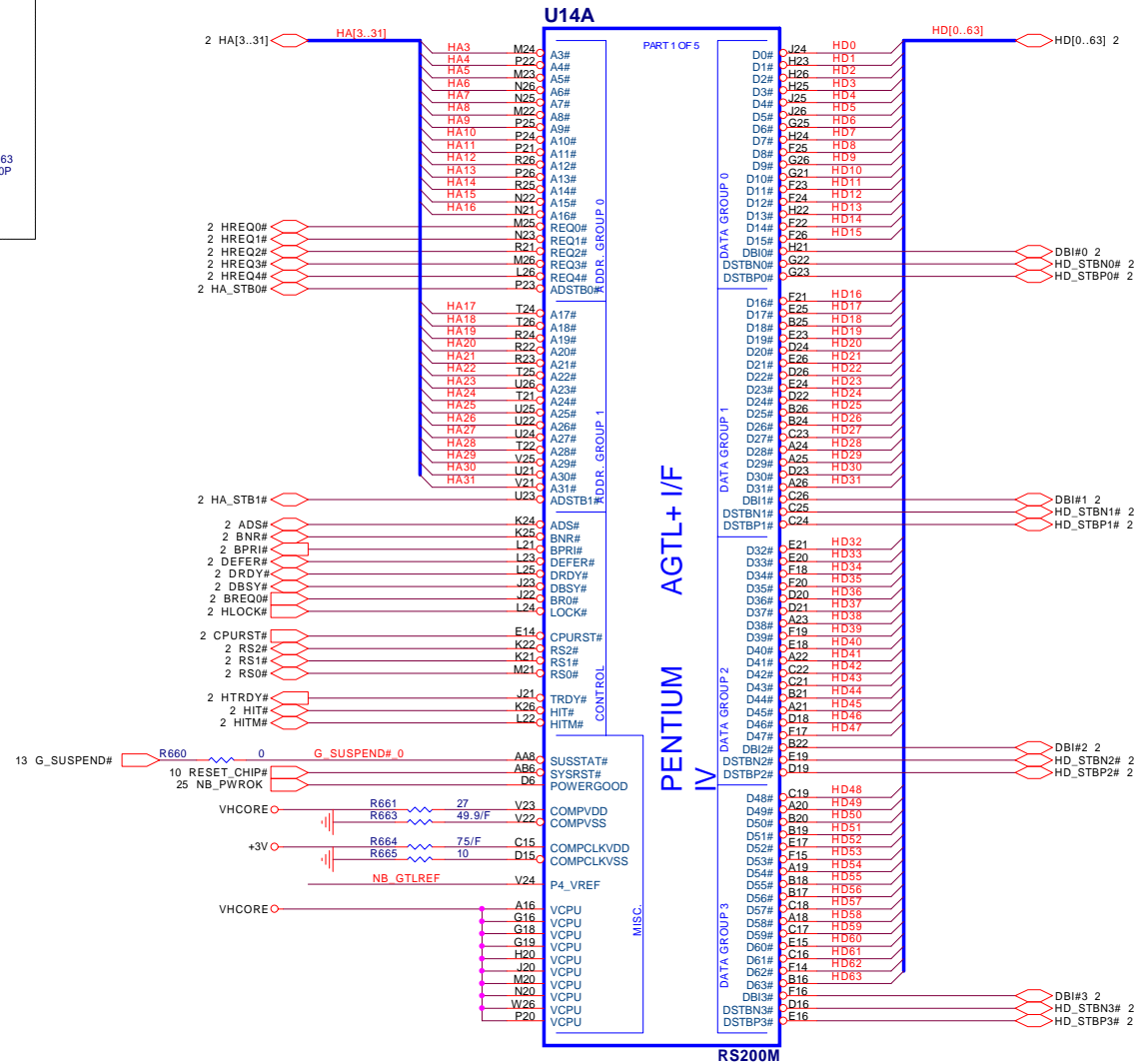
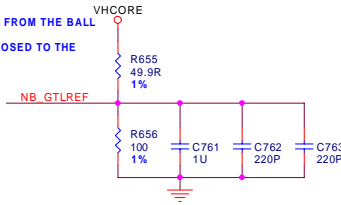


03





- 1) PLACE THOSE CIRCUITS < 1.5" FROM THE BALL
- 2) THE 220PF CAPS HAS TO BE CLOSED TO THE BALL AS POSSIBLE.



PROJECT :EG8L
Quanta Computer Inc.
DAEG8LMB8D8 Rev D

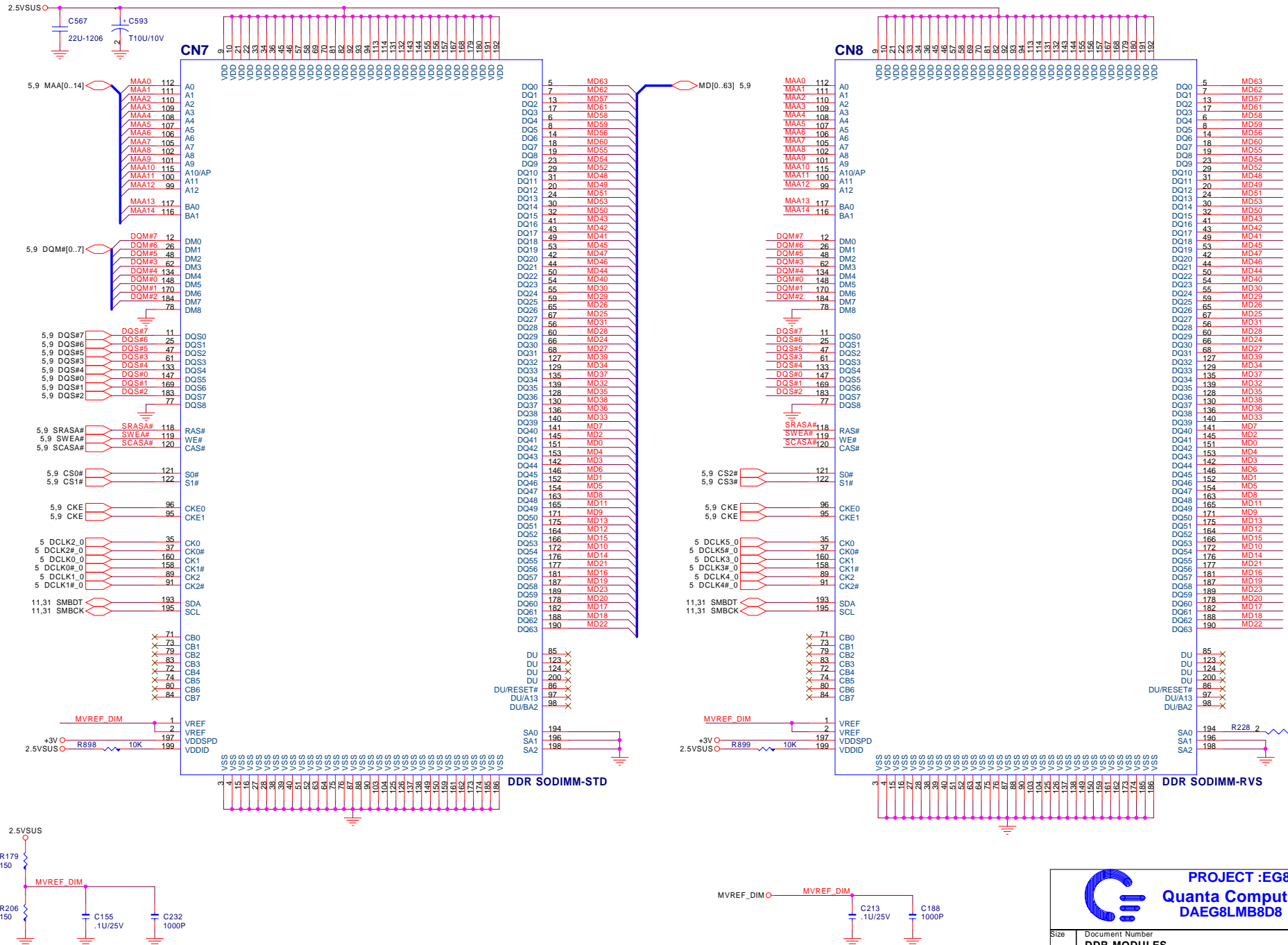
Size	Document Number	Rev
	RS200M-(AGTL+)	2A
Date:	Friday, December 27, 2002	Sheet 4 of 36

06



DDR - Modules

08



PROJECT :EG8L
Quanta Computer Inc.
DAEG8LMB8D8 Rev D

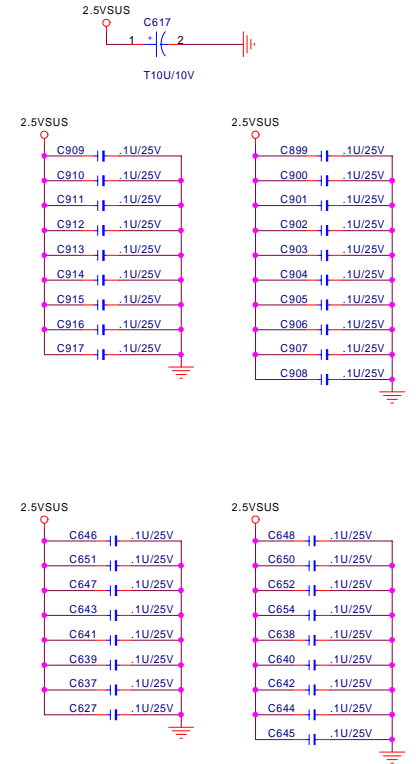
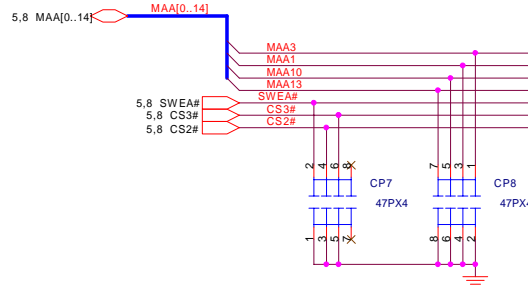
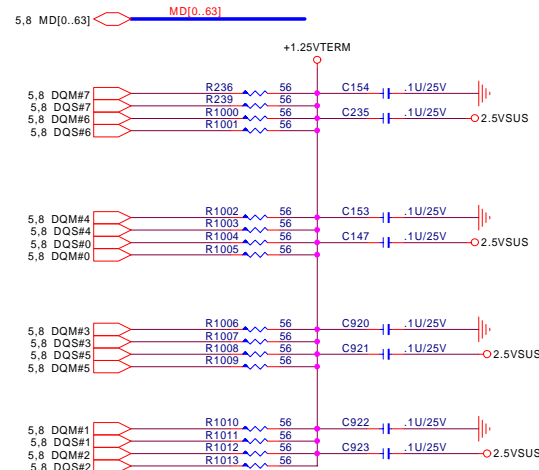
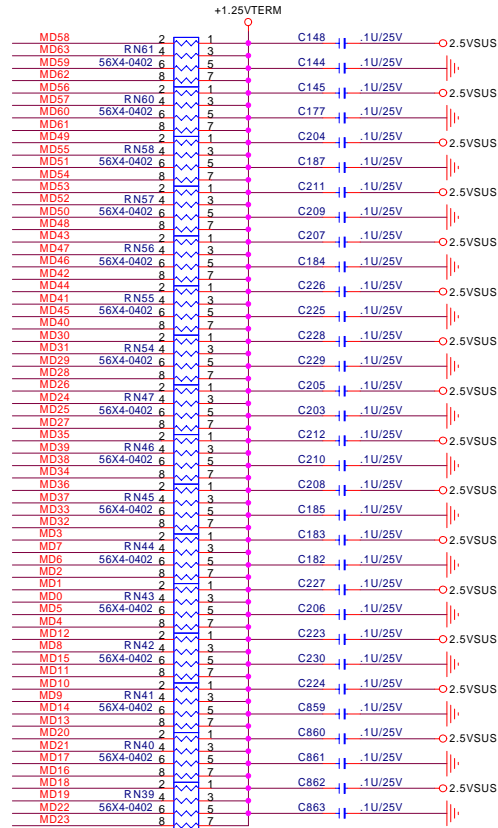
Size	Document Number	Rev
	DDR MODULES	2A
Date:	Friday, December 27, 2002	Sheet 8 of 36

DDR TERMINATOR

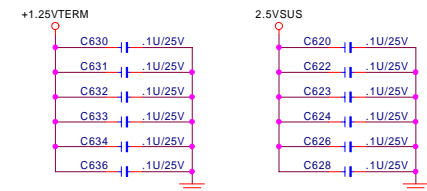
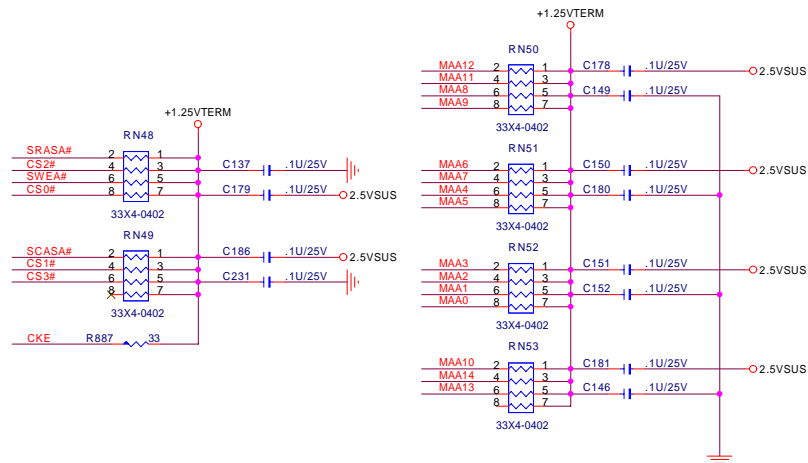
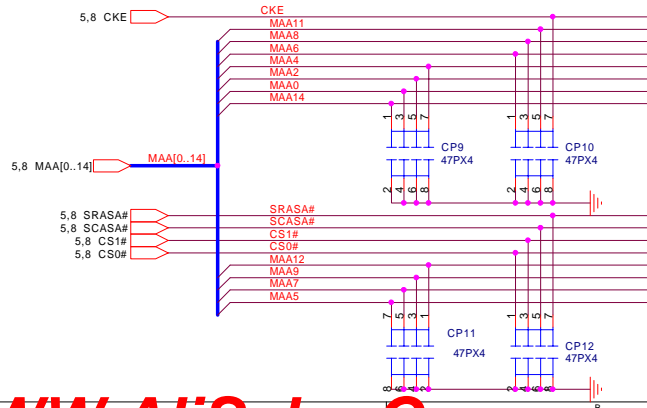
09

MD & DQM & DQS Terminator

EC43_05/03



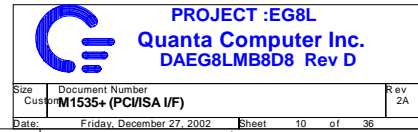
MA Terminator



PROJECT :EG8L
Quanta Computer Inc.
DAEG8LMB8D8 Rev D

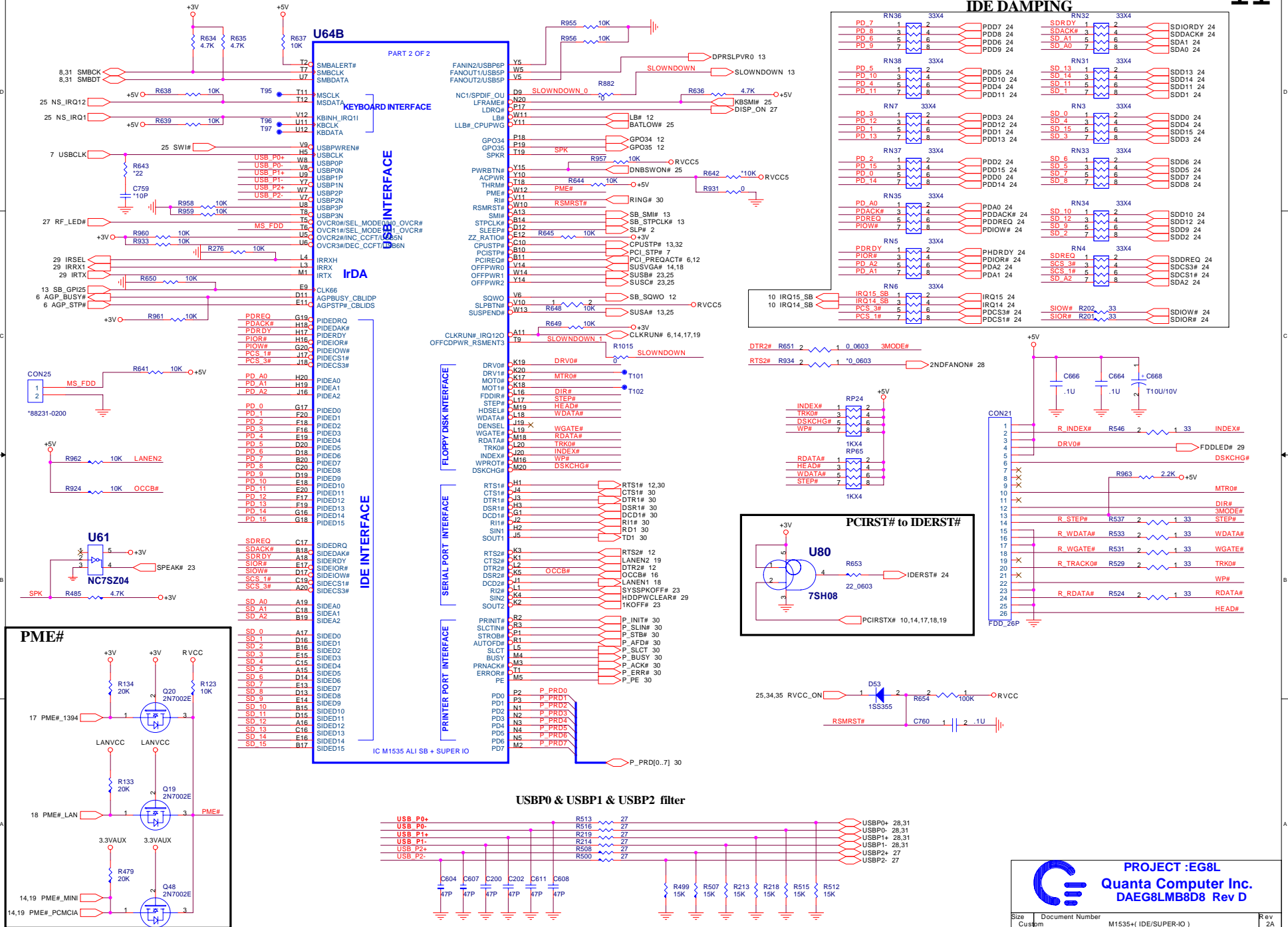
Size	Document Number	Rev
	DDR TERMINATOR	2A
Date:	Friday, December 27, 2002	Sheet 9 of 36

10

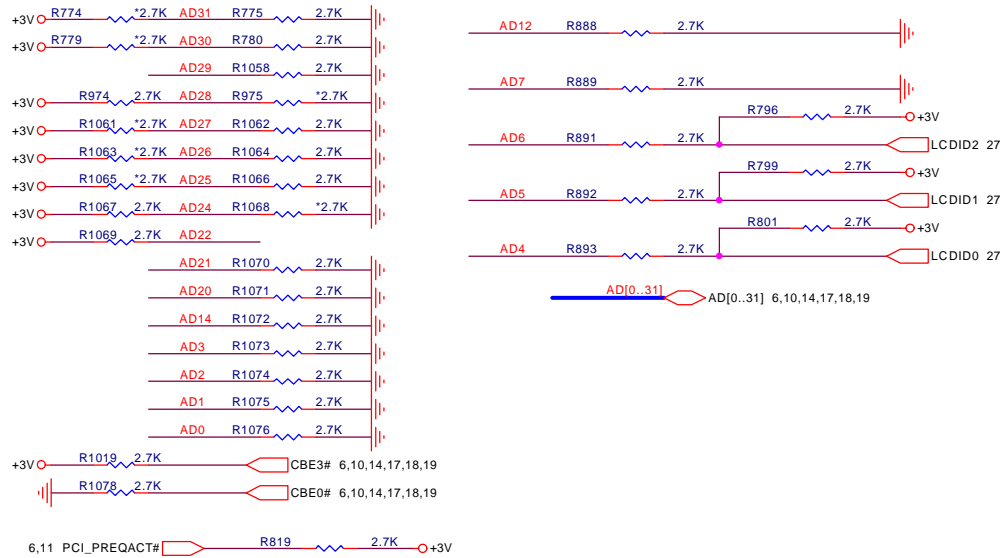


South Bridge - ALI_M1535+ 2/2 (IDE/SUPER-IO Interface)

11



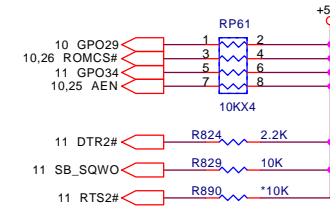
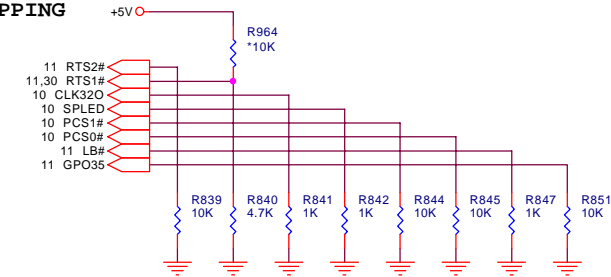
SYSTEM CONFIG. & S.B H/W STRAPPING



De1 RP62,63(10P8R-2.2K)

De1 R783,794(2.7K)

AD[30..31] : CLK SPEED DEFAULT: 00	00: 100 MHZ 01: 133 MHZ 10: 166MHZ 11: 66 MHZ	AD15 : RESERVED
AD29: RS200M FULL CONFIGURATION DEFAULT: 0	0: FULL CONFIGURATION 1: USES DEFAULT VALUES	AD14 : AGTL+ VDDQ DEFAULT: 0
AD28: SPREAD SPECTRUM ENABLE DEFAULT: 1	0: DISABLE 1: ENABLE	AD13: RESERVED
AD27: MCERR OBSERVATION DEFAULT: 0	0: DISABLE 1: ENABLE	AD[12] : FLAT PANEL ID MSB
AD26: QUICK START SELECT DEFAULT: 0	0: DISABLE 1: ENABLE	AD10 : RESERVED
AD25: INIT OBSERVATION DEFAULT: 0	0: DISABLE 1: ENABLE	AD09 : RESERVED
AD24: IOQ ENABLE DEFAULT: 1	0: DISABLE 1: ENABLE	AD[7..4] : FLAT PANEL ID
AD23 : RESERVED		AD3: PC166 MODE DEFAULT: 0
AD22: 27MHz/33 MHz CLOCK SELECTION DEFAULT: 1	0: 33 MHz CLOCK OUTPUT 1: 27 MHz CLOCK INPUT	AD2: CAL DEFAULTS FOR CPU DEFAULT: 0
AD21 : RESERVED	0: PLL Bypass mode disable(Normal mode) 1: PLL Bypass mode enable(Debug only)	AD1: FrcShortReset DEFAULT: 0
AD20 : PCICLK EXPANSION DEFAULT: 0	1: PCI_REQ#3, PCI_GNT#3 USED AS PCICLK 0: PCI_REQ#3, PCI_GNT#3 USED AS REQ/GNT	AD0: PCI/AGP CONFIG. DEFAULT: 0
CBE3# : PROD TEST DEFAULT: 1	0: SHORT TIMERS 1: NORMAL OPERATION	PCI_PREOACT#: INTERNAL CLOCK GEN. DEFAULT: 1
CBE0# : Reserve DEFAULT: 0		



	DTR2#	RTS2#	RTS1#	CLK32O	SPLED	SQWO
PULL HIGH	INTERNAL KEYBOARD PS2 MODE DEFAULT	ENABLE INTERNAL KEYBOARD	SIO BASE ADDRESS 0x3F0h	32K CLOCK TEST MODE ENABLE	AT POWER MODE	PENTIUM II MODE DEFAULT
PULL LOW	INTERNAL KEYBOARD AT MODE	DISABLE INTERNAL KEYBOARD	SIO BASE ADDRESS 0x370h	32K CLOCK TEST MODE DISABLE	ATX POWER MODE	PENTIUM / K7 MODE

PCS1#	PCS0#	GPO34	LB#	GPO30[AEN]	GPO29	ROMCS#	GPO35
GPI24 & GPO30 FUNCTIONS	DISABLE 4Mb FLASH ROM MODE	CHIP TEST MODE DISABLE DEFAULT	ACTIVE HIGH TO POWER OFF	L, L - USB TEST MODE L, H - AUDIO/MODEM TEST MODE H, L - SUPER IO TEST MODE		FLASH ROM MODE SELECTION L, L - RESERVED L, H - ENABLE 8Mb Flash ROM SIZE H, L - DISABLE ALL FUNC. IN THIS CONFIG. H, H - ENABLE LPC FLASH ROM	
IOCHRDY & AEN FUNCTIONS	ENABLE 4Mb FLASH ROM MODE	CHIP TEST MODE ENABLE	ACTIVE LOW TO POWER OFF	H, H - NORMAL OPERATION			
DEFAULT	DEFAULT		DEFAULT	DEFAULT : H, H		DEFAULT : H, L	

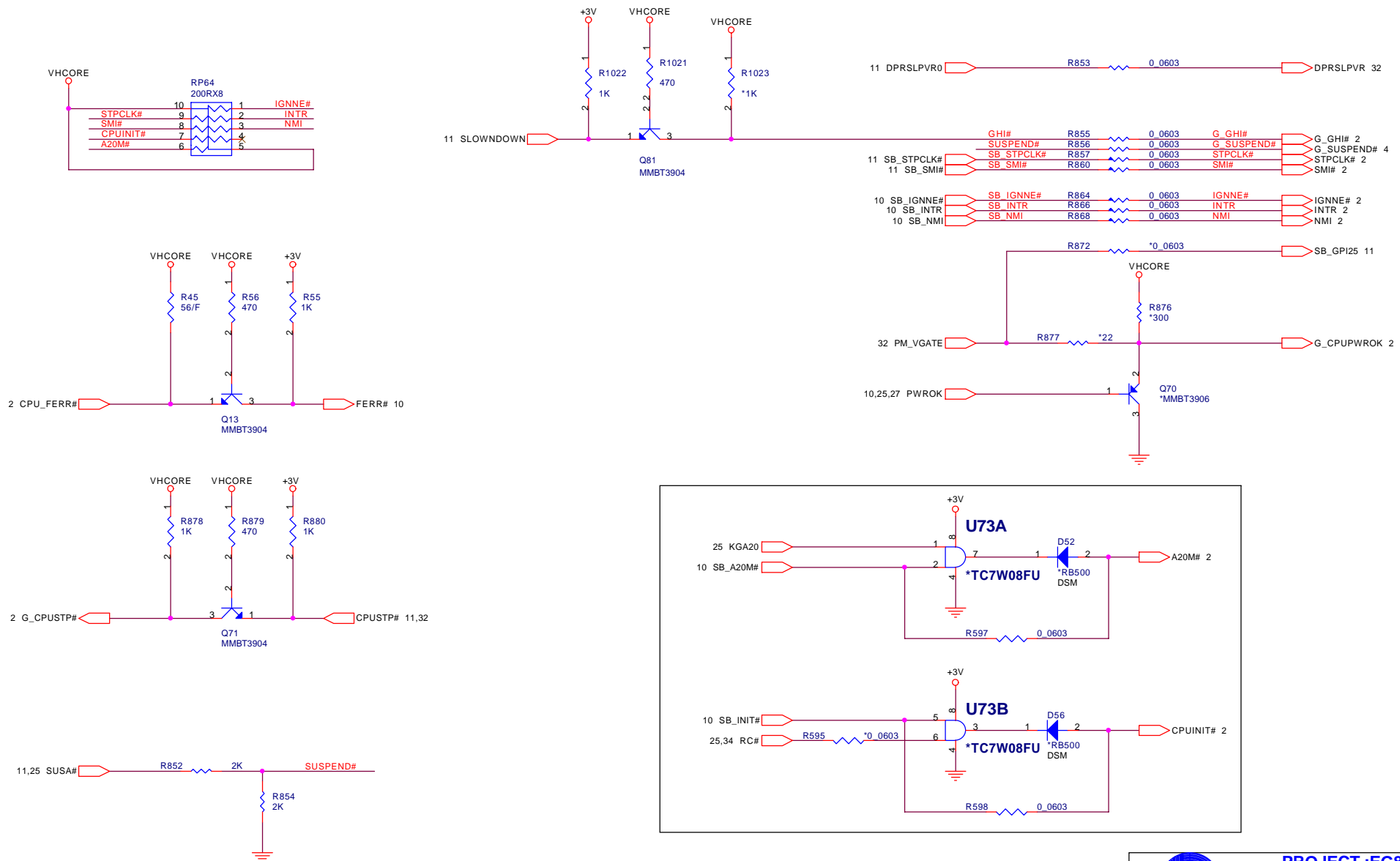


PROJECT : EG8L
Quanta Computer Inc.
DAEG8LMB8D8 Rev D

Size	Document Number	Rev
	SYSTEM CONFIG. & S/B H/W STRAPPING	2A
Date:	Friday, December 27, 2002	Sheet 12 of 36

ALI_M1535+ Internal GCL

13



PROJECT :EG8L
Quanta Computer Inc.
DAEG8LMB8D8 Rev D

Size	Document Number	Rev
	M1535+ internal GCL	2A
Date:	Friday, December 27, 2002	Sheet 13 of 36

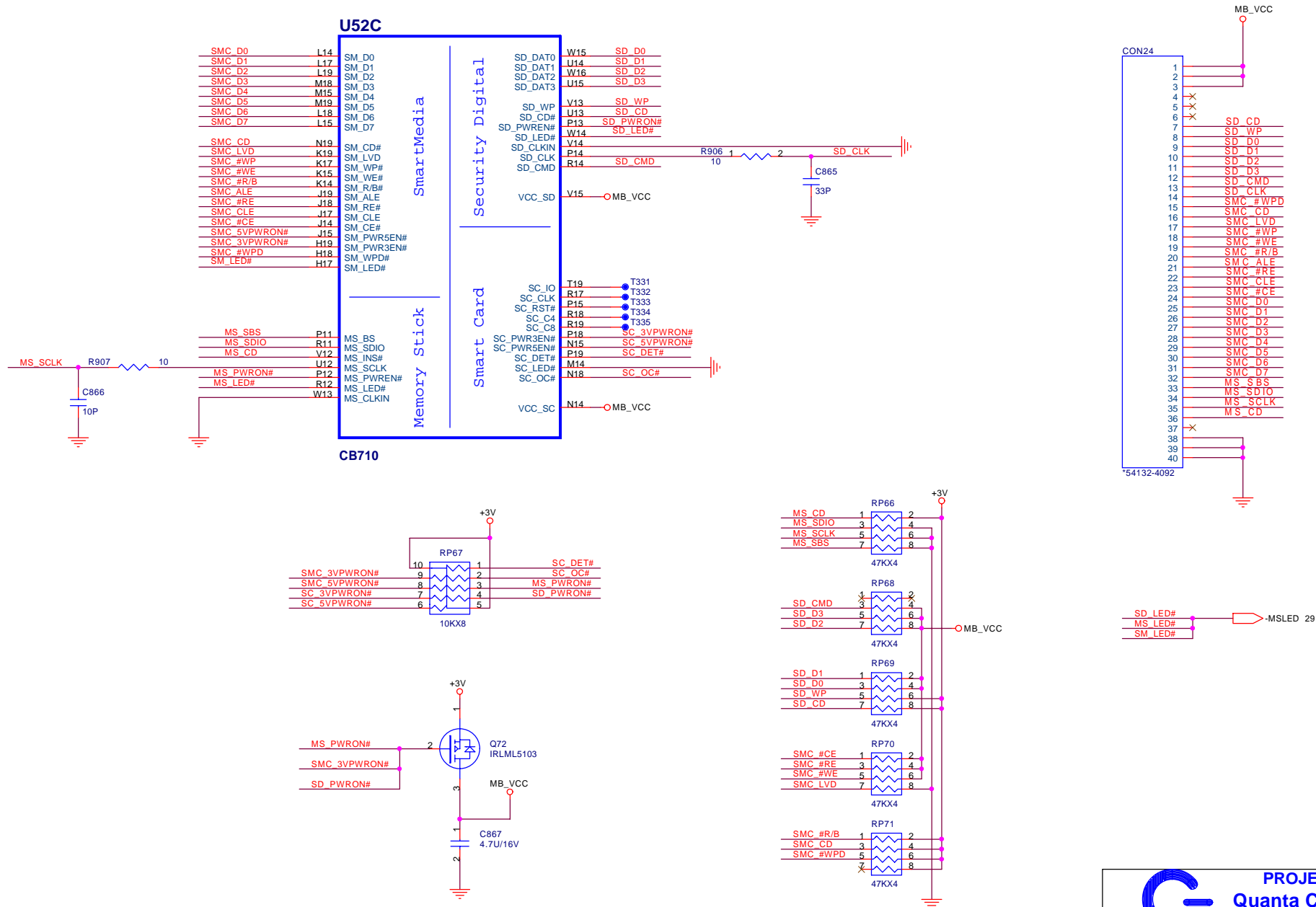
14



Size	Document Number	Rev
	CARBUS CONTROLLER - CB710 _ 1/2	2A
Date:	Friday, December 27, 2002	Sheet 14 of 36

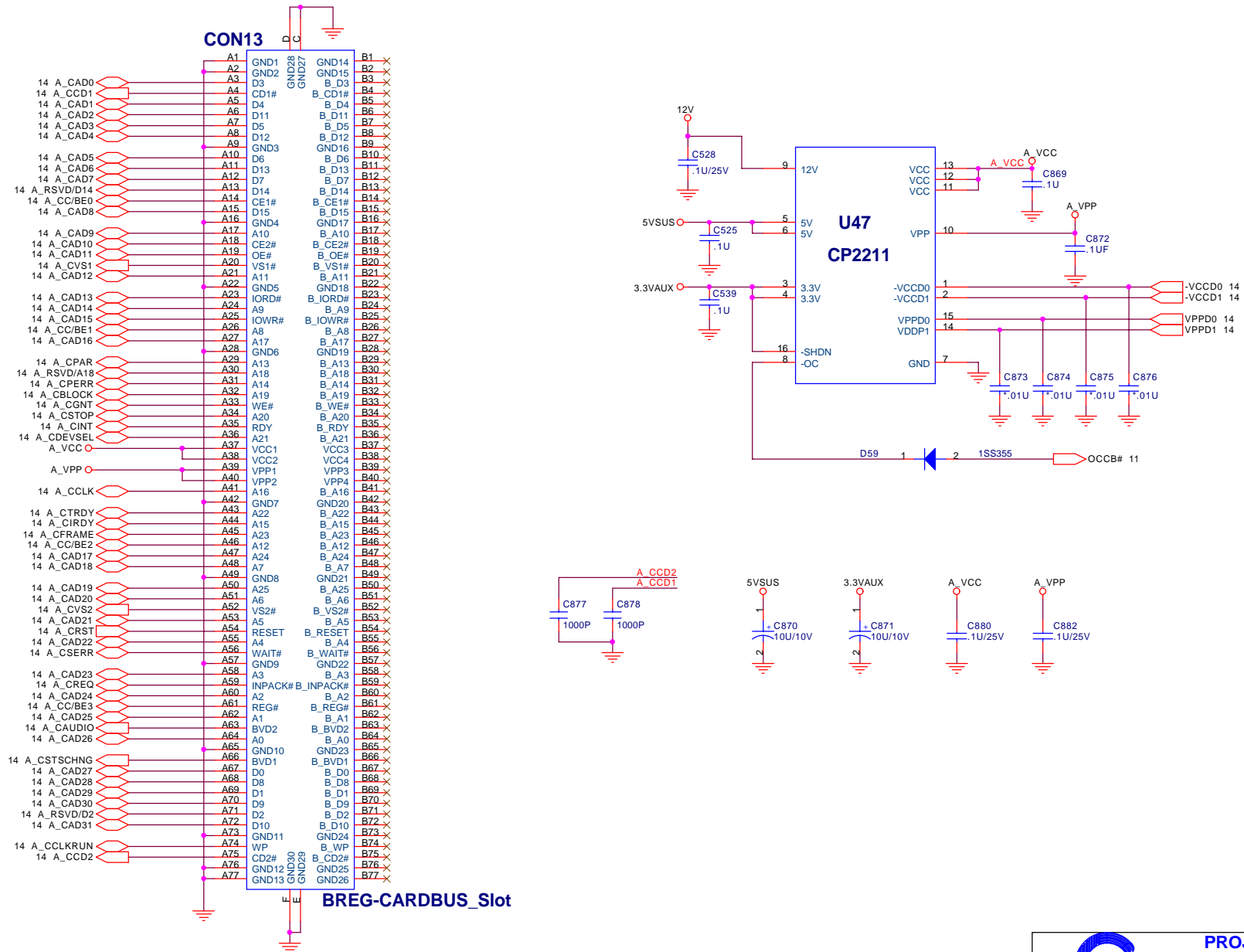
CARDBUS CONTROLLER - CB710_ 2/2 (Memorystick I/F)

15




CARDBUS slot

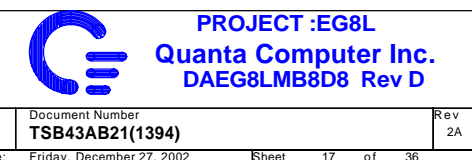
16

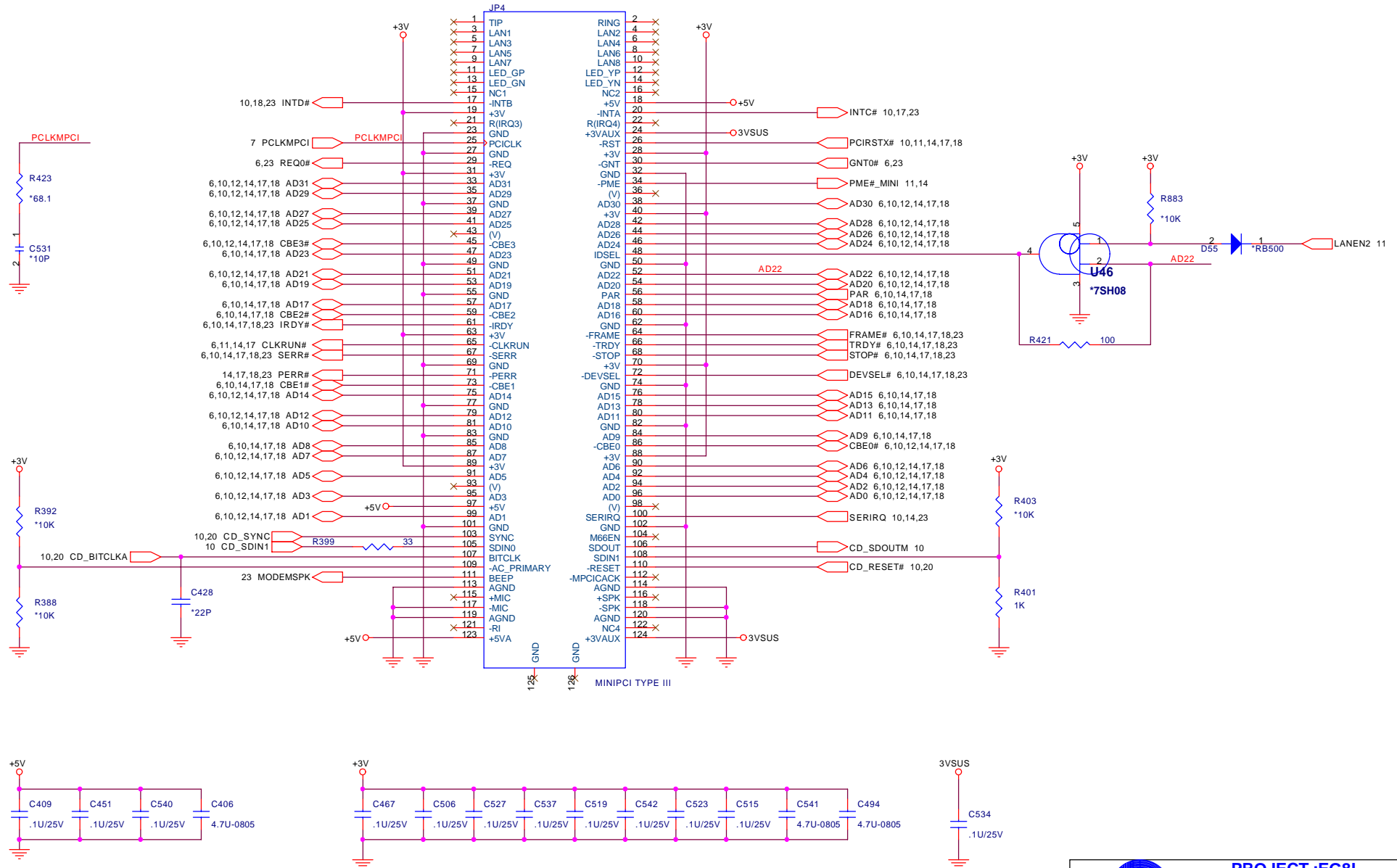


CARDBUS PCMCIA SOCKET

 PROJECT :EG8L Quanta Computer Inc. DAEG8LMB8D8 Rev D		
Size	Document Number	Rev
	CARDBUS SLOT	2A
Date:	Friday, December 27, 2002	Sheet 16 of 36

17

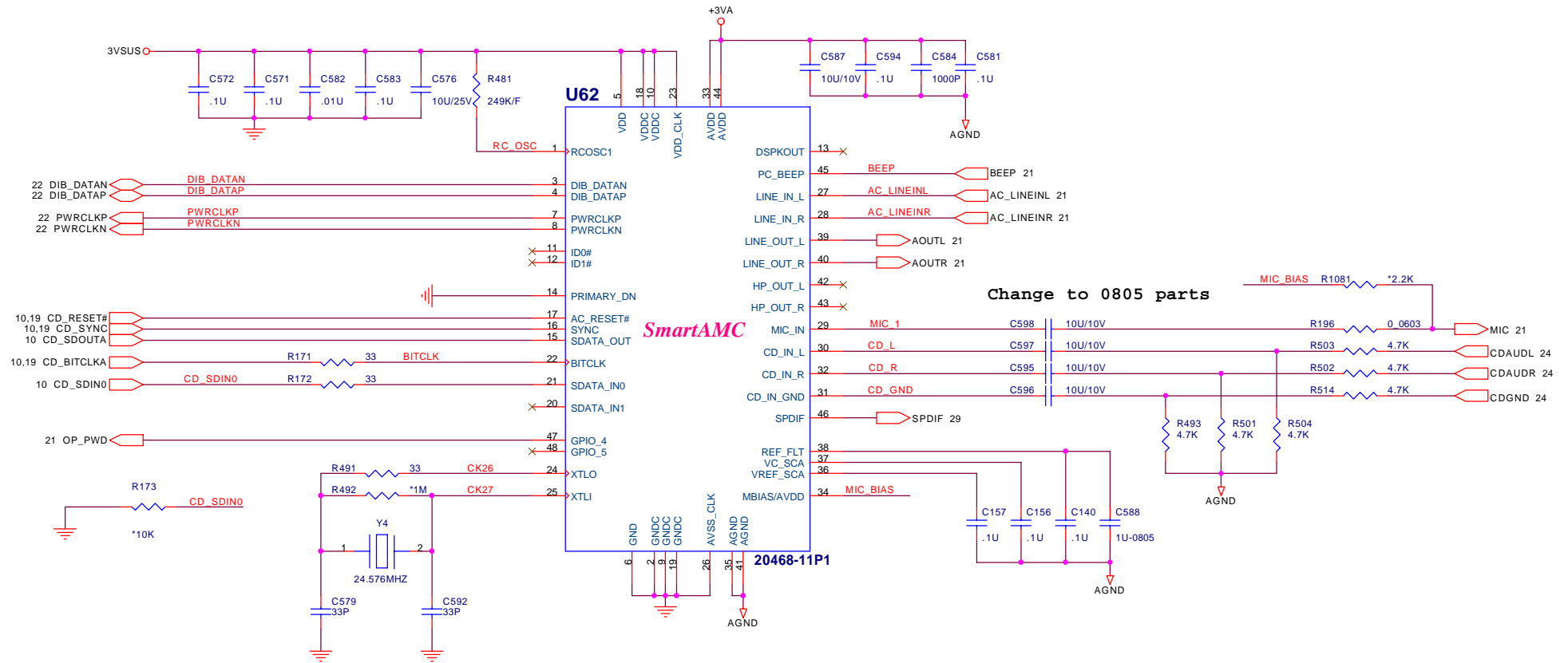




PROJECT :EG8L
Quanta Computer Inc.
DAEG8LMB8D8 Rev D

Size	Document Number	Rev
	MINI-PCI	2A
Date:	Friday, December 27, 2002	Sheet 19 of 36

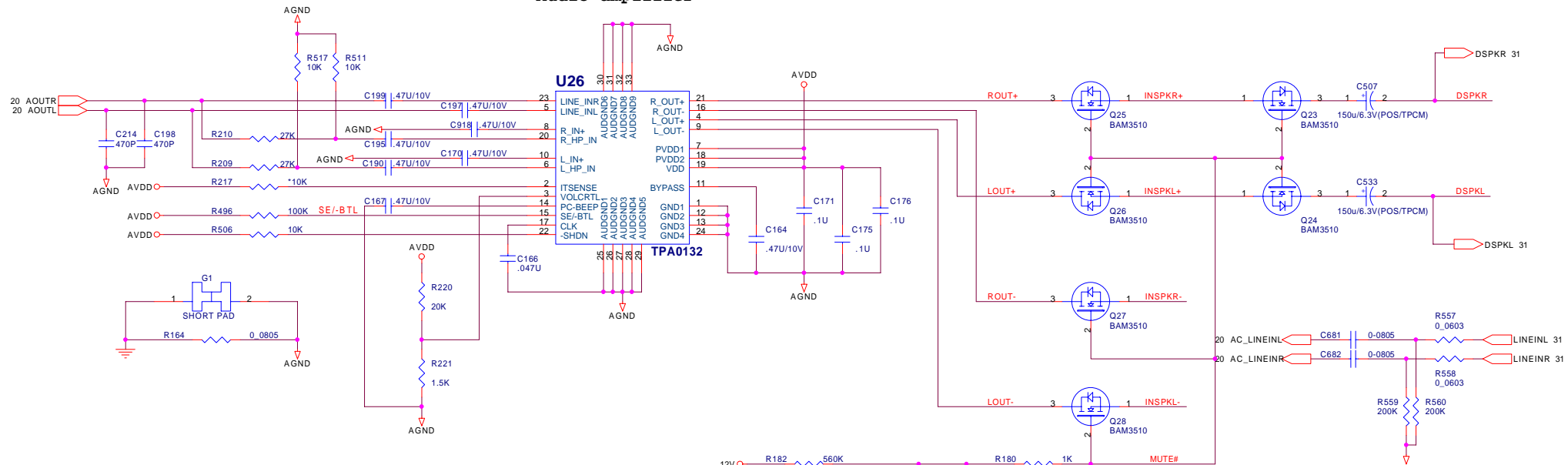
The AMC20463-001 modem is used for mother board family MBAMC20463-005.



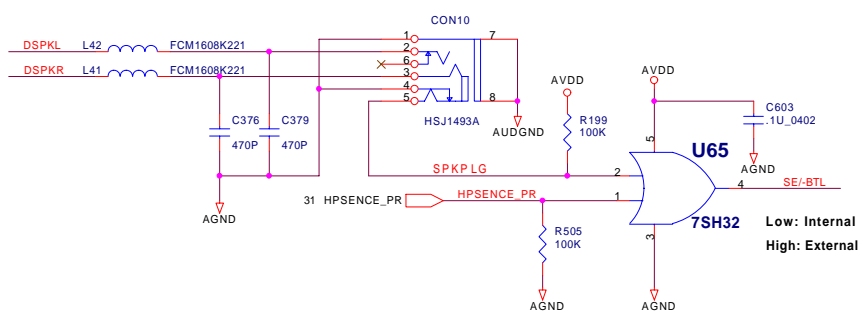
PROJECT :EG8L
Quanta Computer Inc.
DAEG8LMB8D8 Rev D

Size	Document Number	Rev
	AMC97- Controller	2A
Date:	Friday, December 27, 2002	Sheet 20 of 36

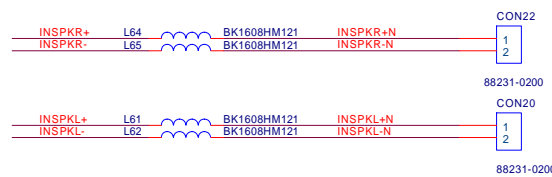
Audio amplifier



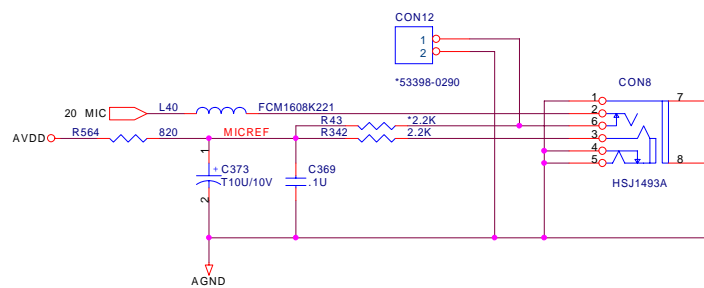
EXTERNAL SPEAKER



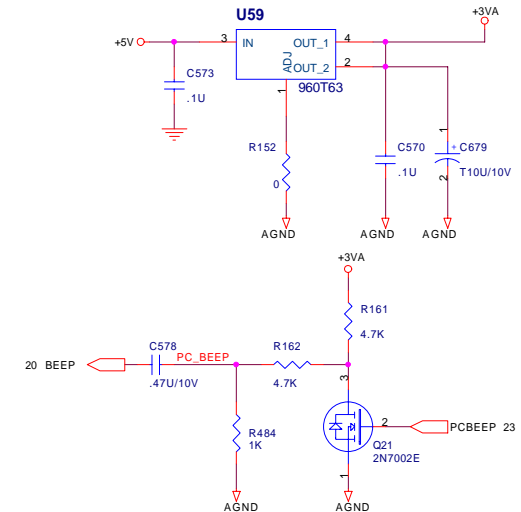
SPEAKER CONNECTOR



MICPHONE CONNECTOR



5V --> +3VA



PROJECT :EG8L
Quanta Computer Inc.
DAEG8LMB8D8 Rev D

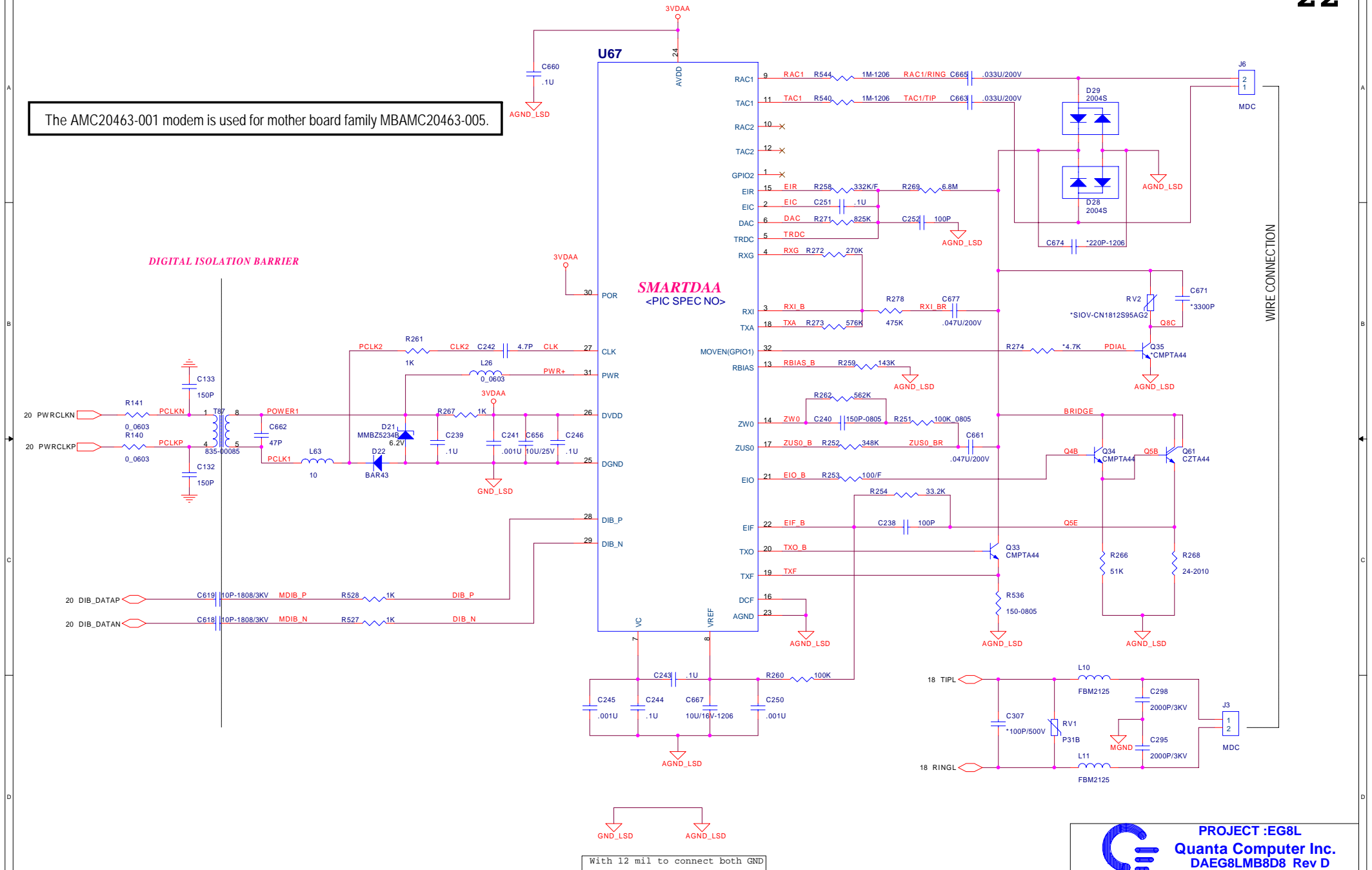
Size	Document Number	Rev
	AMPLIFIER	2A
Date:	Friday, December 27, 2002	Sheet 21 of 36

The AMC20463-001 modem is used for mother board family MBAMC20463-005.

DIGITAL ISOLATION BARRIER

SMARTDAA
<PIC SPEC NO>

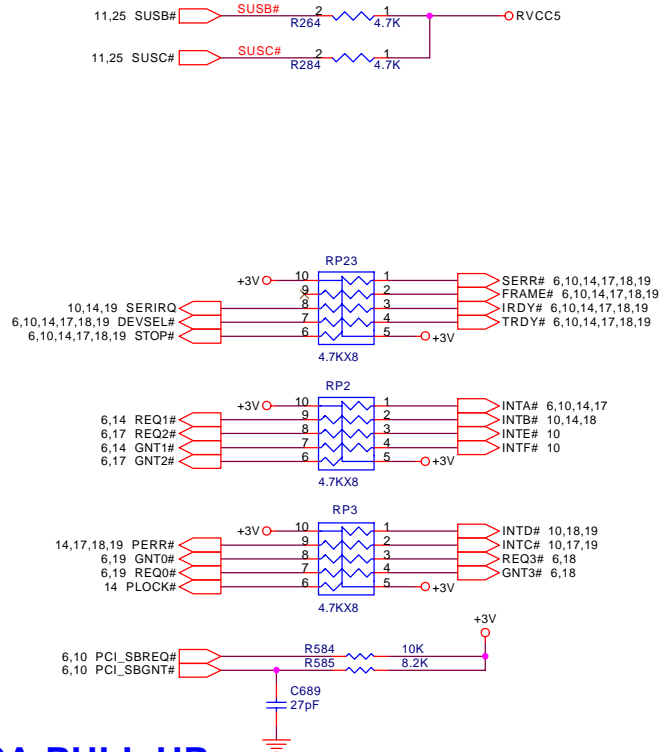
WIRE CONNECTION



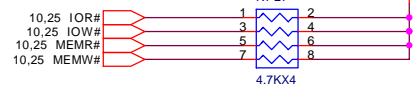
PROJECT :EG8L
Quanta Computer Inc.
DAEG8LMB8D8 Rev D

Size	Document Number	Rev
	MODEM DAA	2A
Date:	Friday, December 27, 2002	Sheet 22 of 36

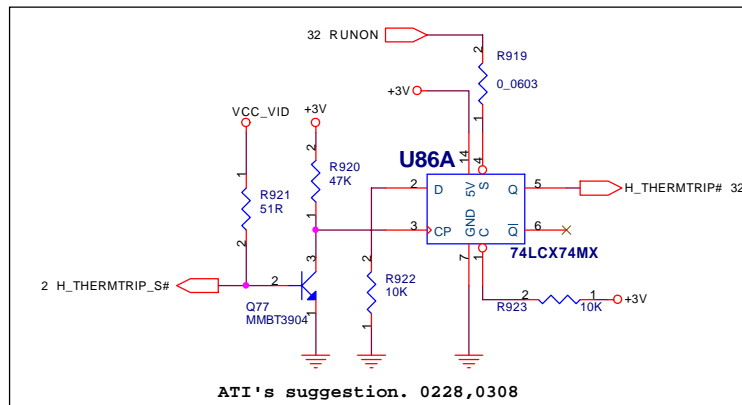
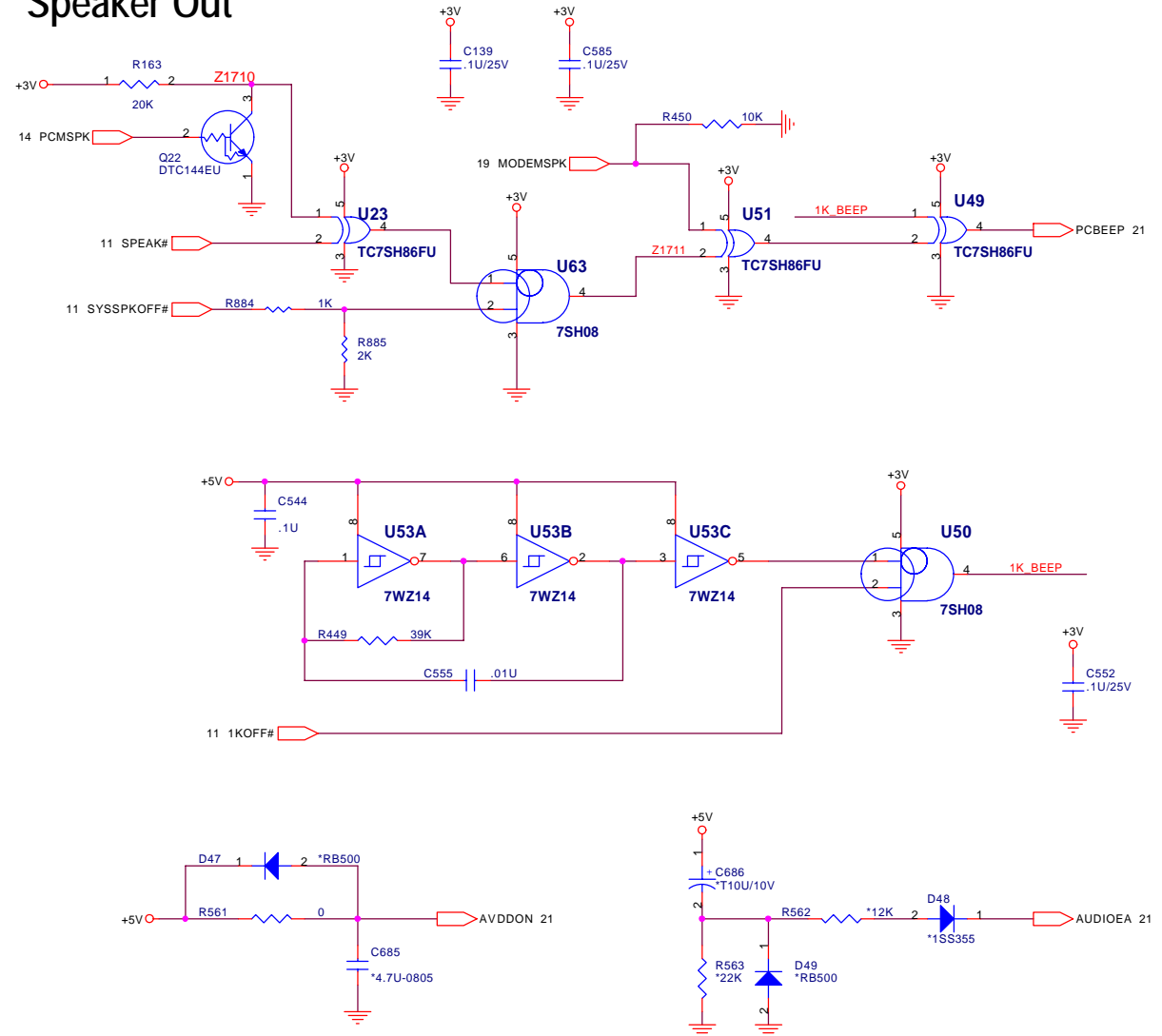
PCI PULL UP



ISA PULL UP



Speaker Out



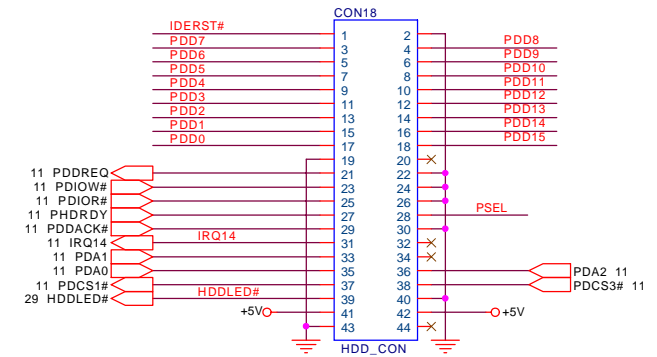
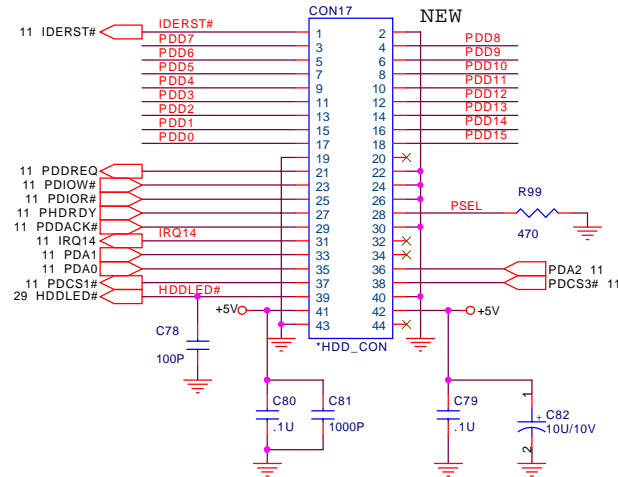
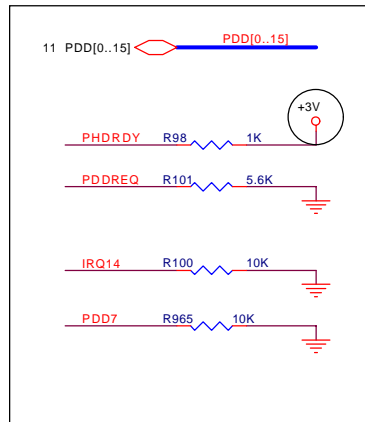
ATI's suggestion. 0228,0308



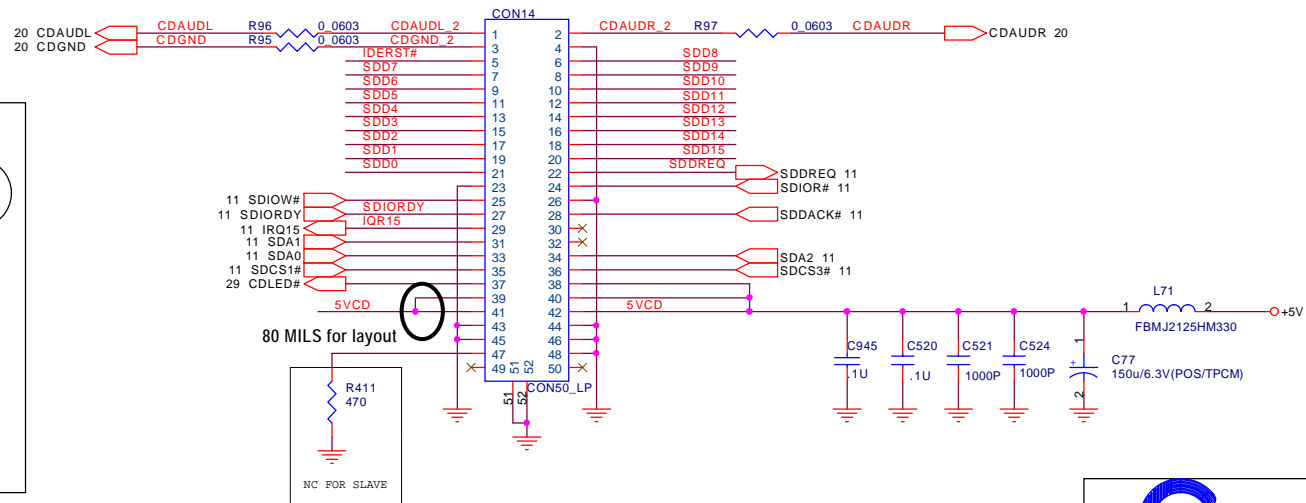
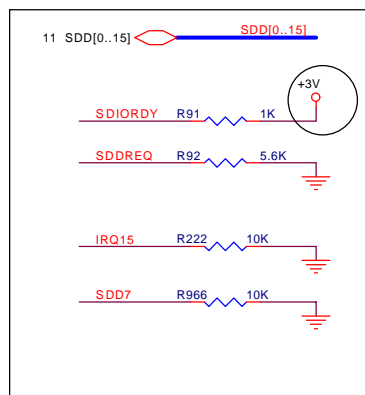
PROJECT :EG8L
Quanta Computer Inc.
DAEG8LMB8D8 Rev D

Size	Document Number	Rev
	PULL UP,SPEAKER	2A
Date:	Friday, December 27, 2002	Sheet 23 of 36

HDD connector



CD-ROM connector

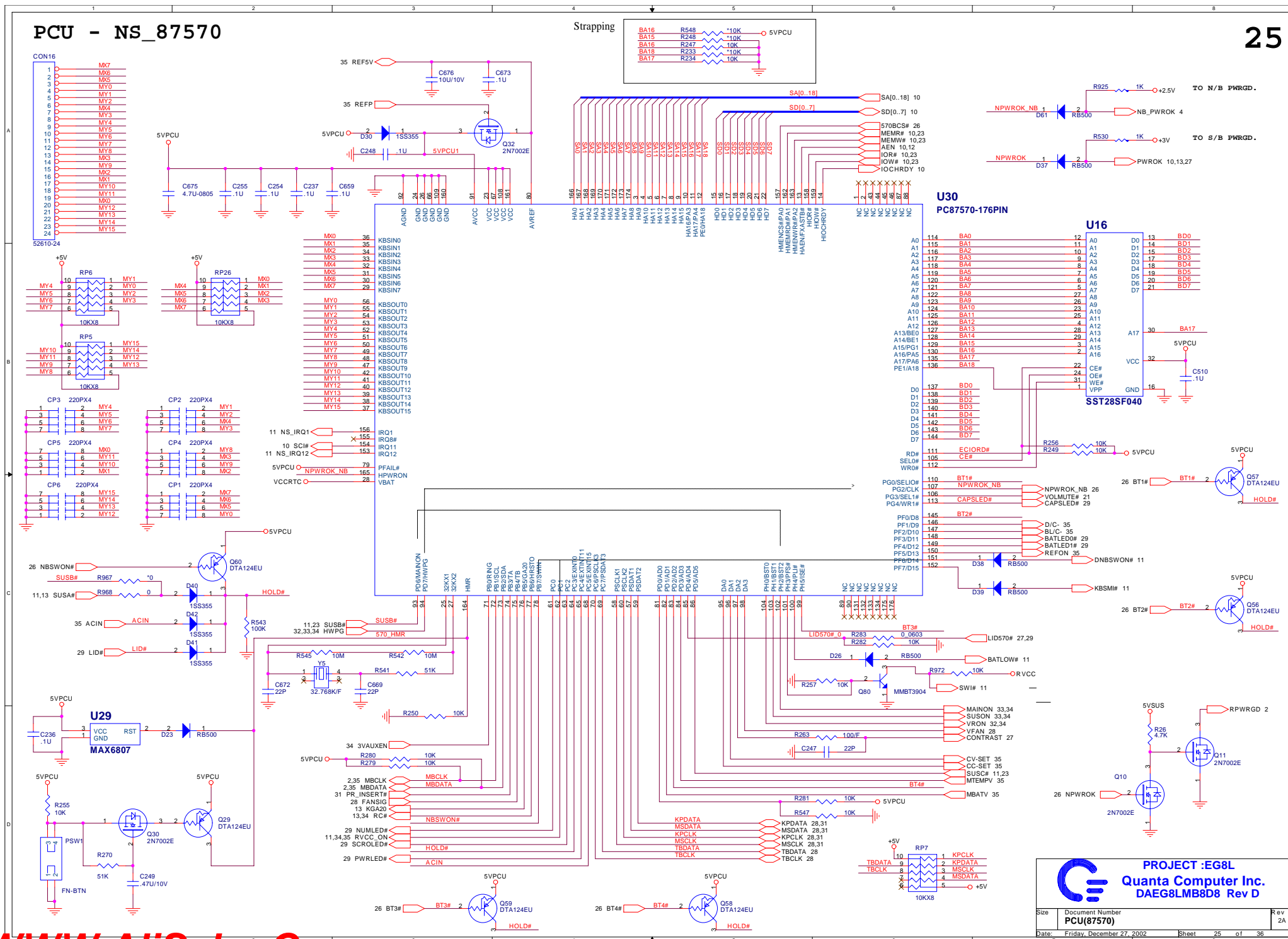


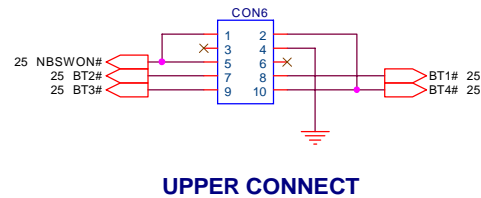
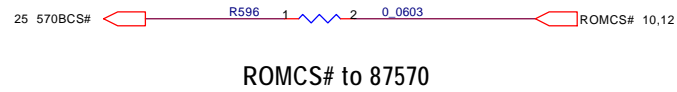
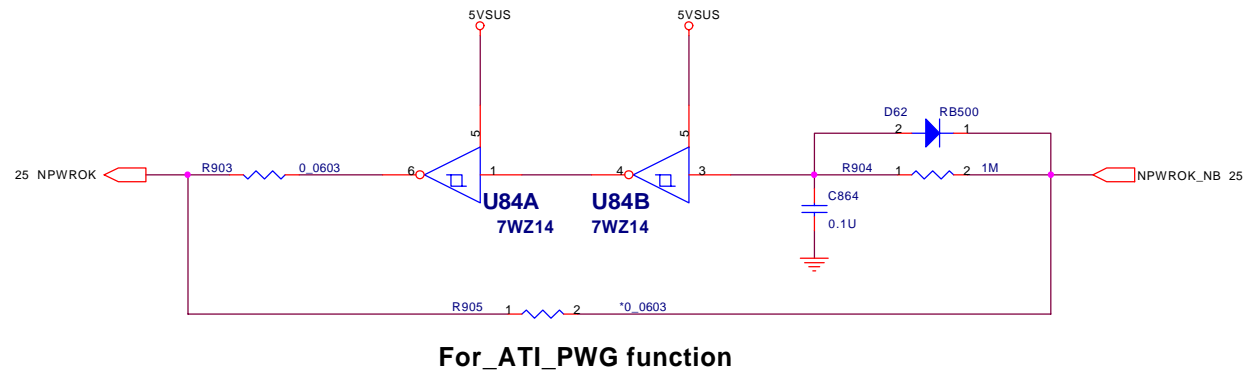
PROJECT :EG8L
Quanta Computer Inc.
DAEG8LMB8D8 Rev D

Size	Document Number	Rev
	HDD,CD-ROM	2A
Date:	Friday, December 27, 2002	Sheet 24 of 36

PCU - NS 87570

25



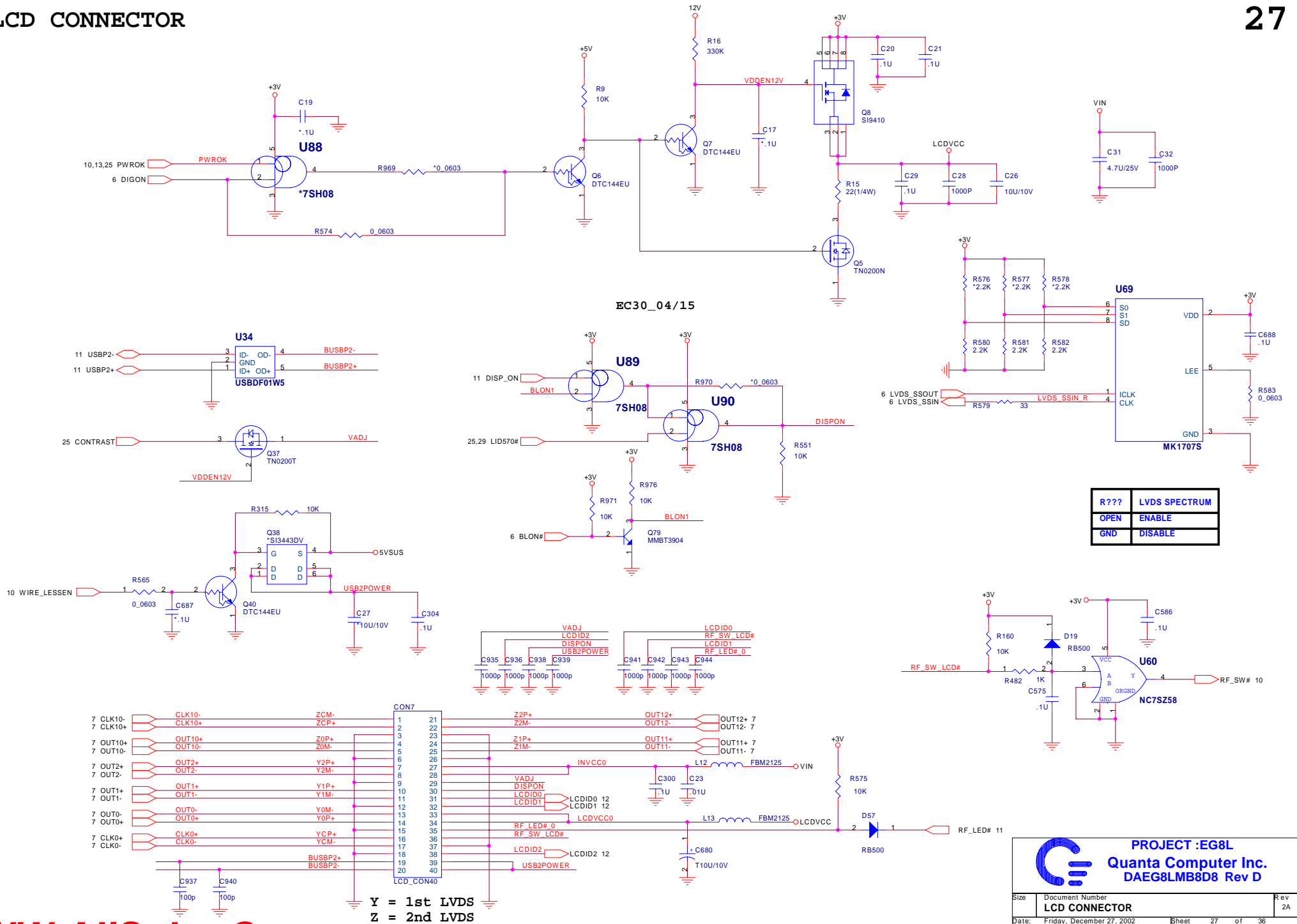


PROJECT :EG8L
Quanta Computer Inc.
DAEG8LMB8D8 Rev D

Size	Document Number	Rev
	GLUE Logic & Upper Board	2A
Date:	Friday, December 27, 2002	Sheet 26 of 36

LCD CONNECTOR

27

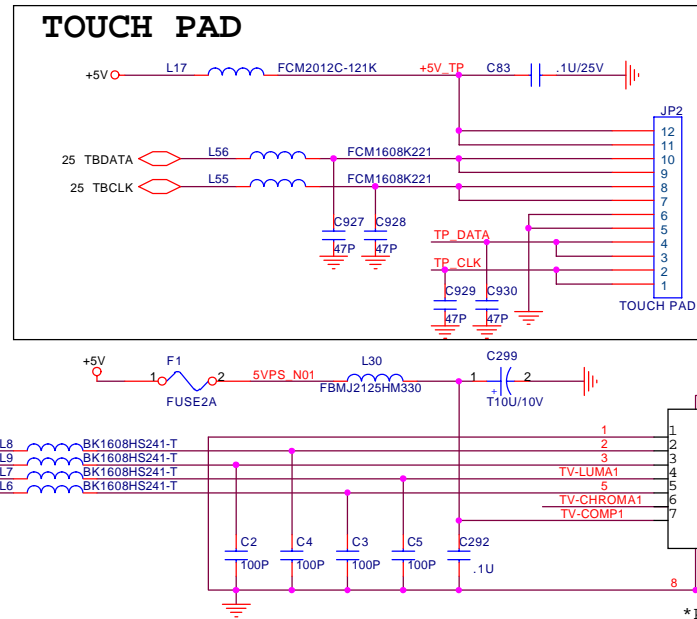
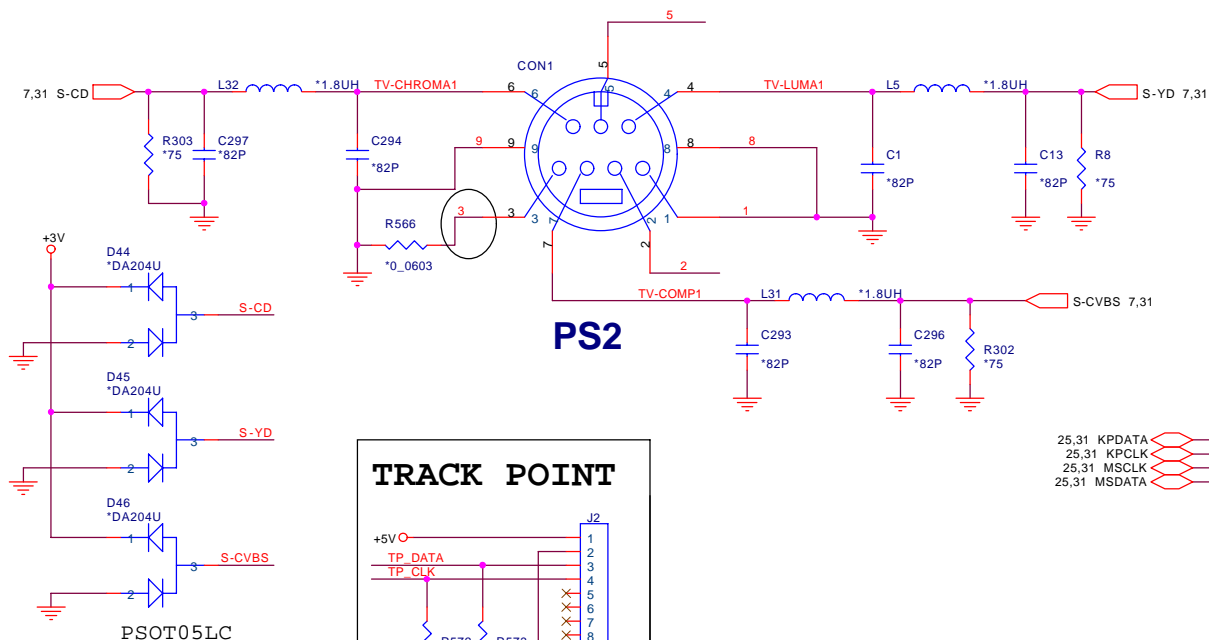


PROJECT :EG8L
Quanta Computer Inc.
DAEG8LMB8D8 Rev D

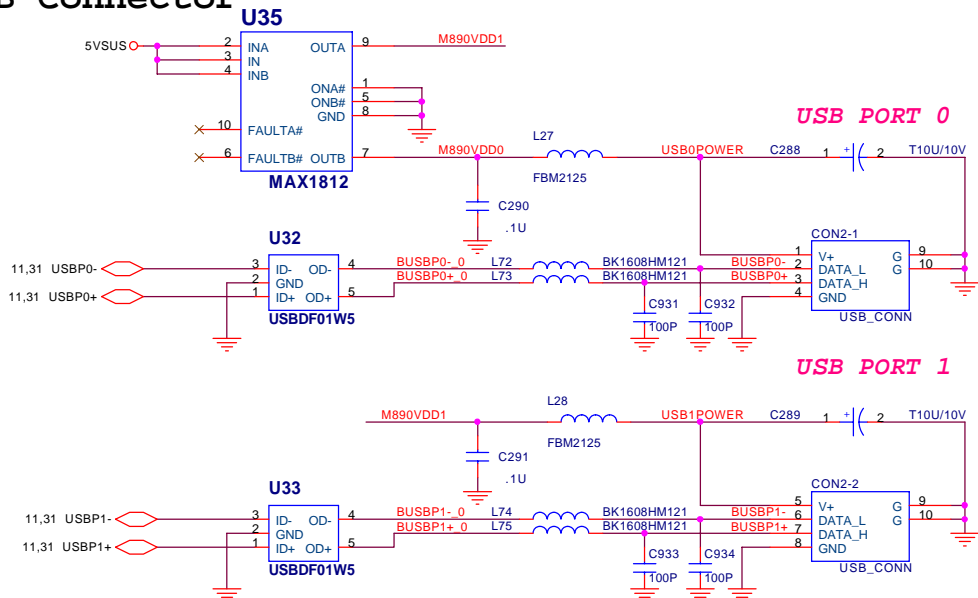
Size	Document Number	Rev
	LCD CONNECTOR	2A
Date:	Friday, December 27, 2002	Sheet 27 of 36

S-VIDEO,USB ,FAN,PS/2 ,T/P Connector

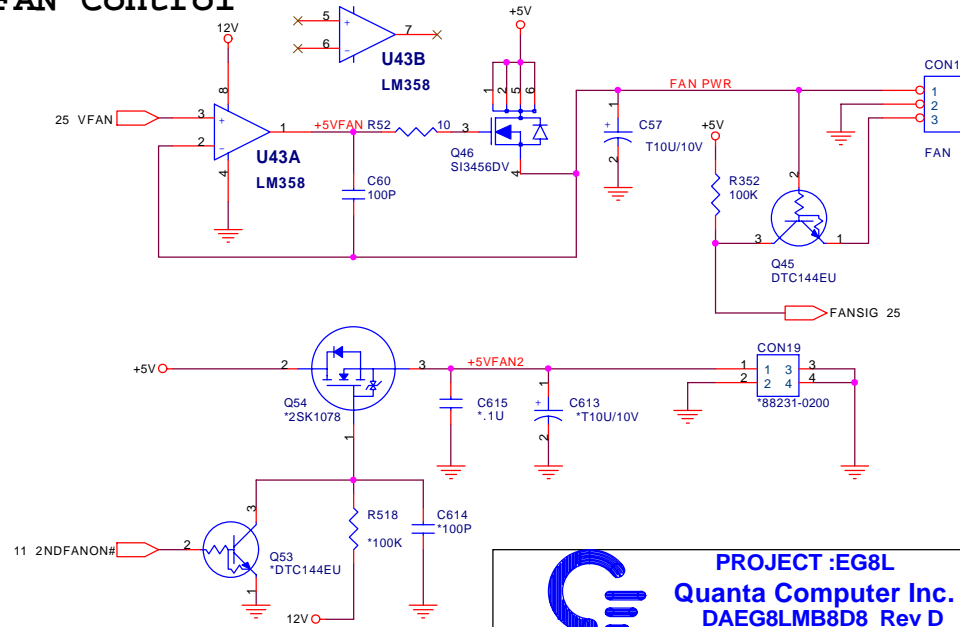
28



USB Connector



FAN Control

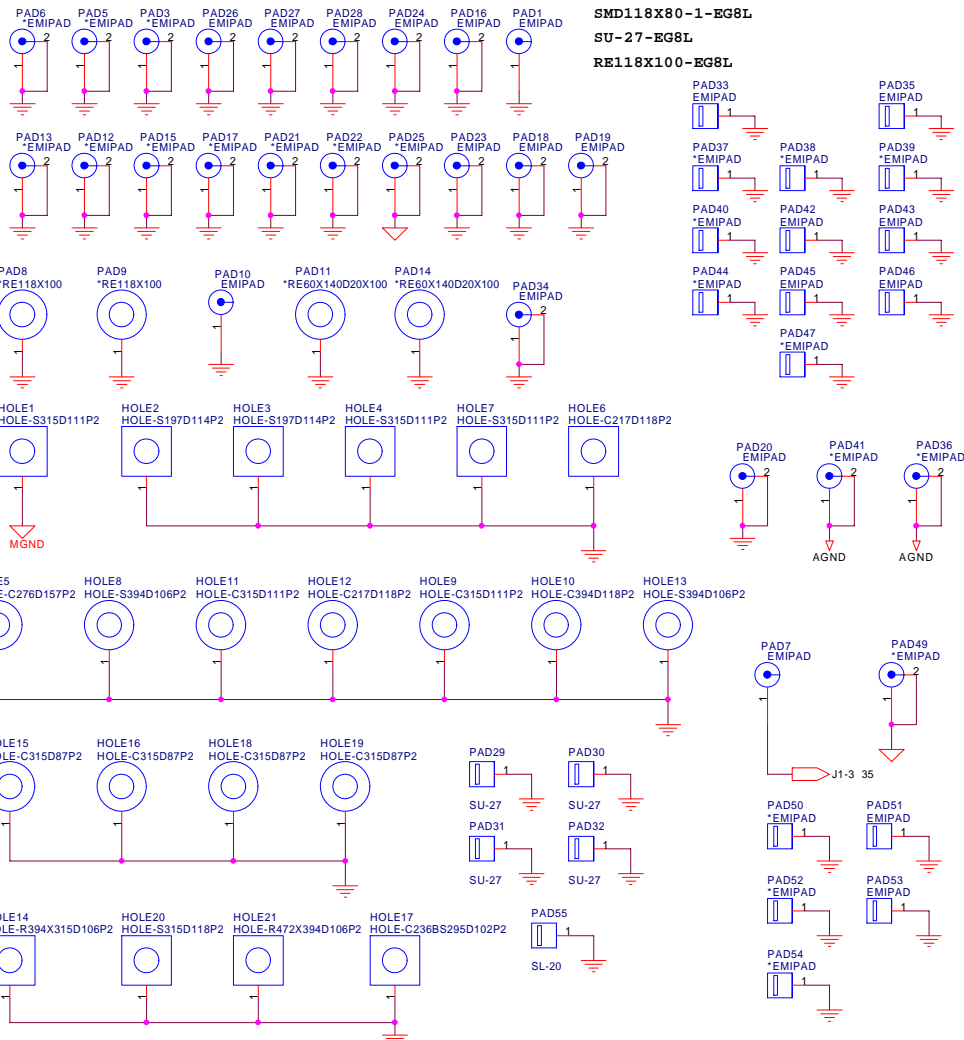
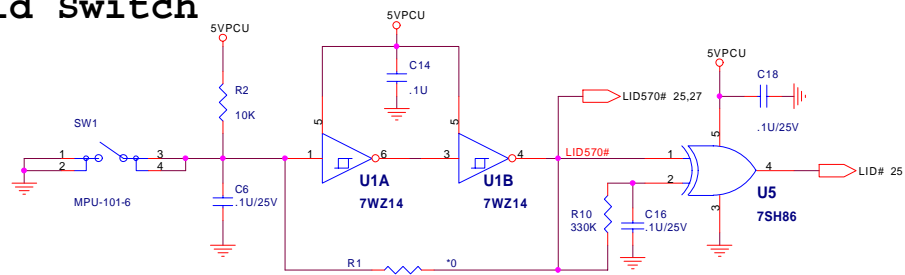


PROJECT :EG8L
Quanta Computer Inc.
DAEG8LMB8D8 Rev D

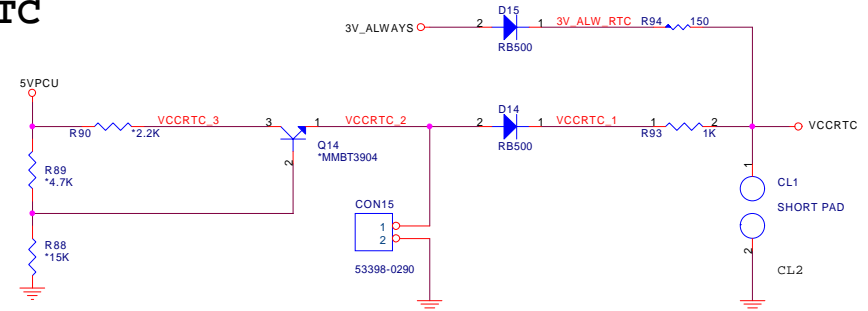
Size	Document Number	Rev
	S-VIDEO,FAN,PS/2,USB,T/P	2A
Date:	Friday, December 27, 2002	Sheet 28 of 36

LED,RTC,LID,IR,SPDIF Control Logic

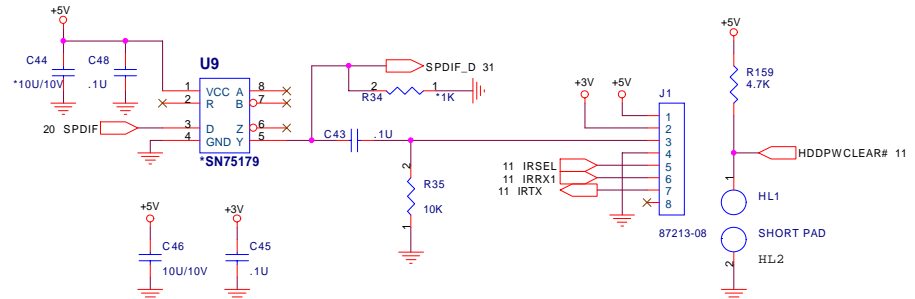
Lid Switch



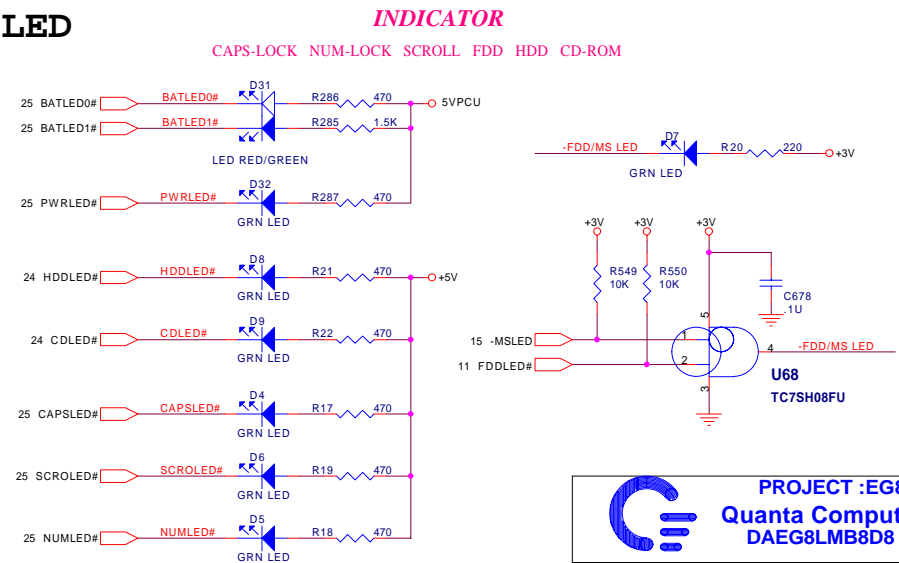
RTC




IR Conn.



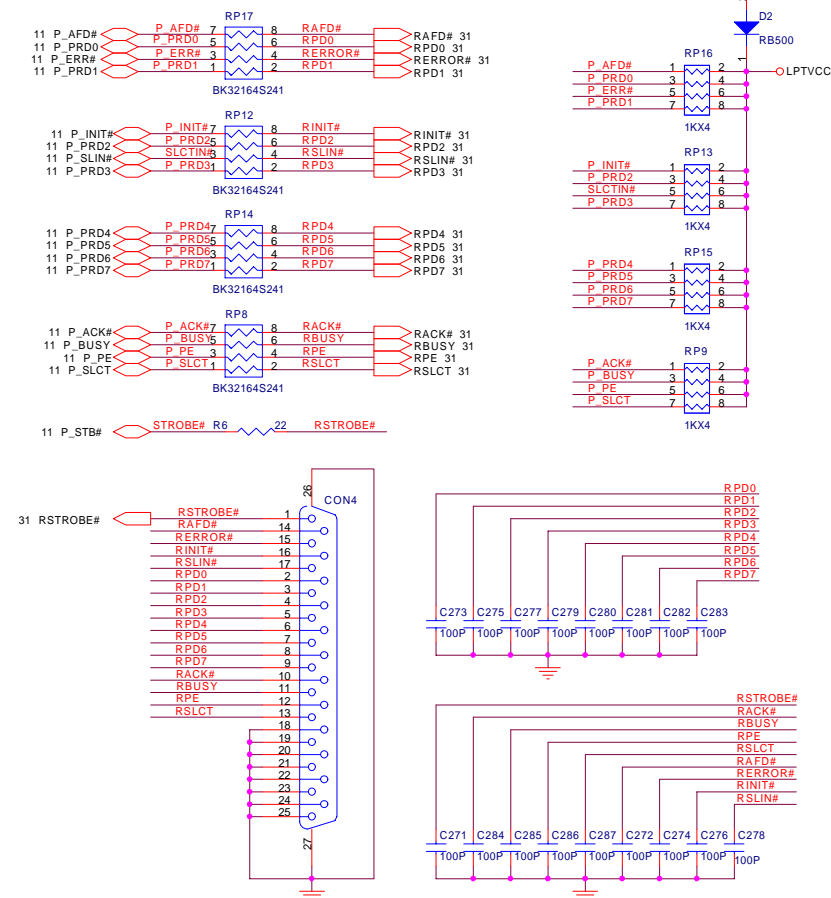
LED



 PROJECT :EG8L
Quanta Computer Inc.
DAEG8LMB8D8 Rev D

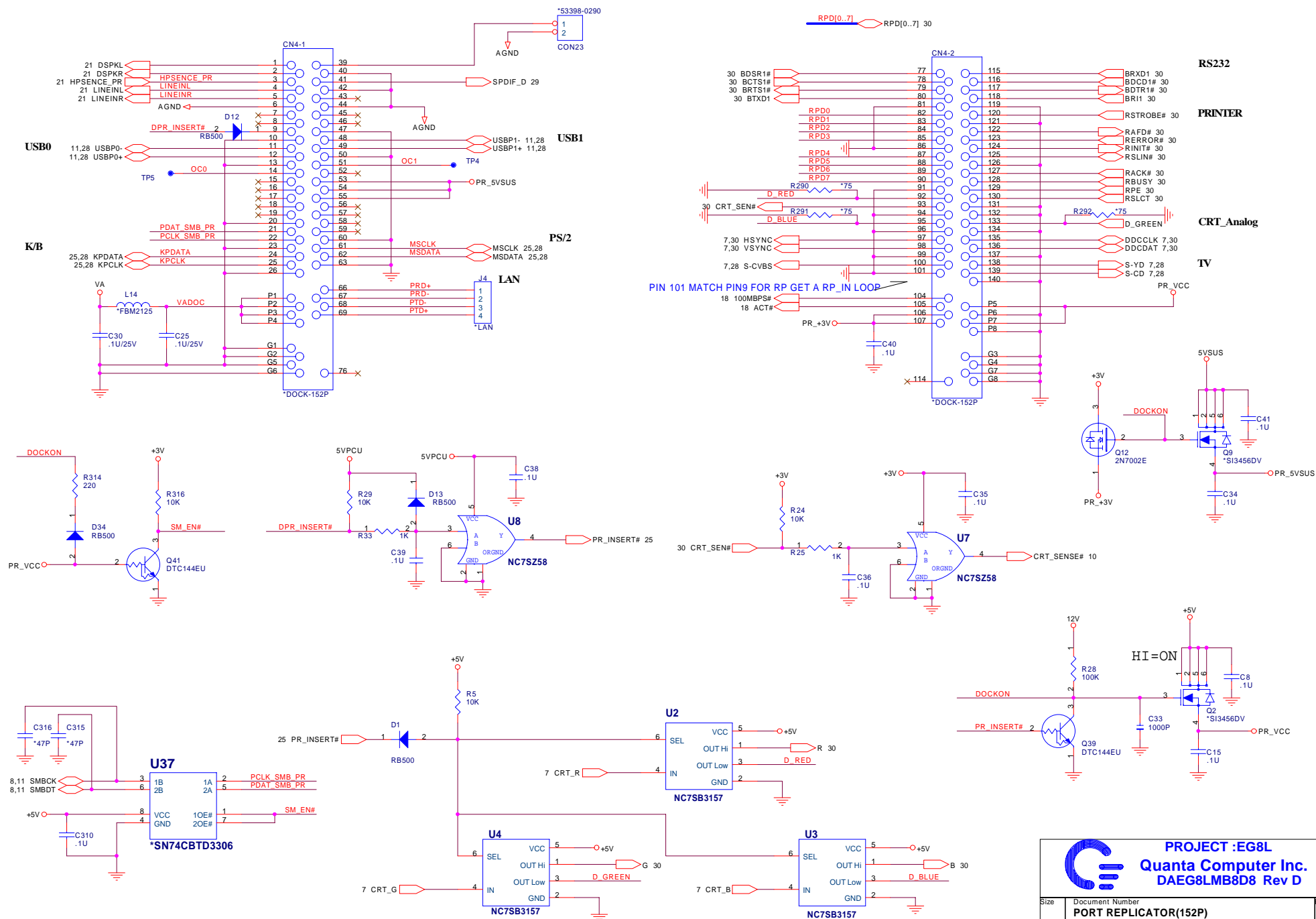
Size	Document Number LED,RTC,LID,IR,SPDIF Control Logic	Rev 2A
Date:	Friday, December 27, 2002	Sheet 29 of 36

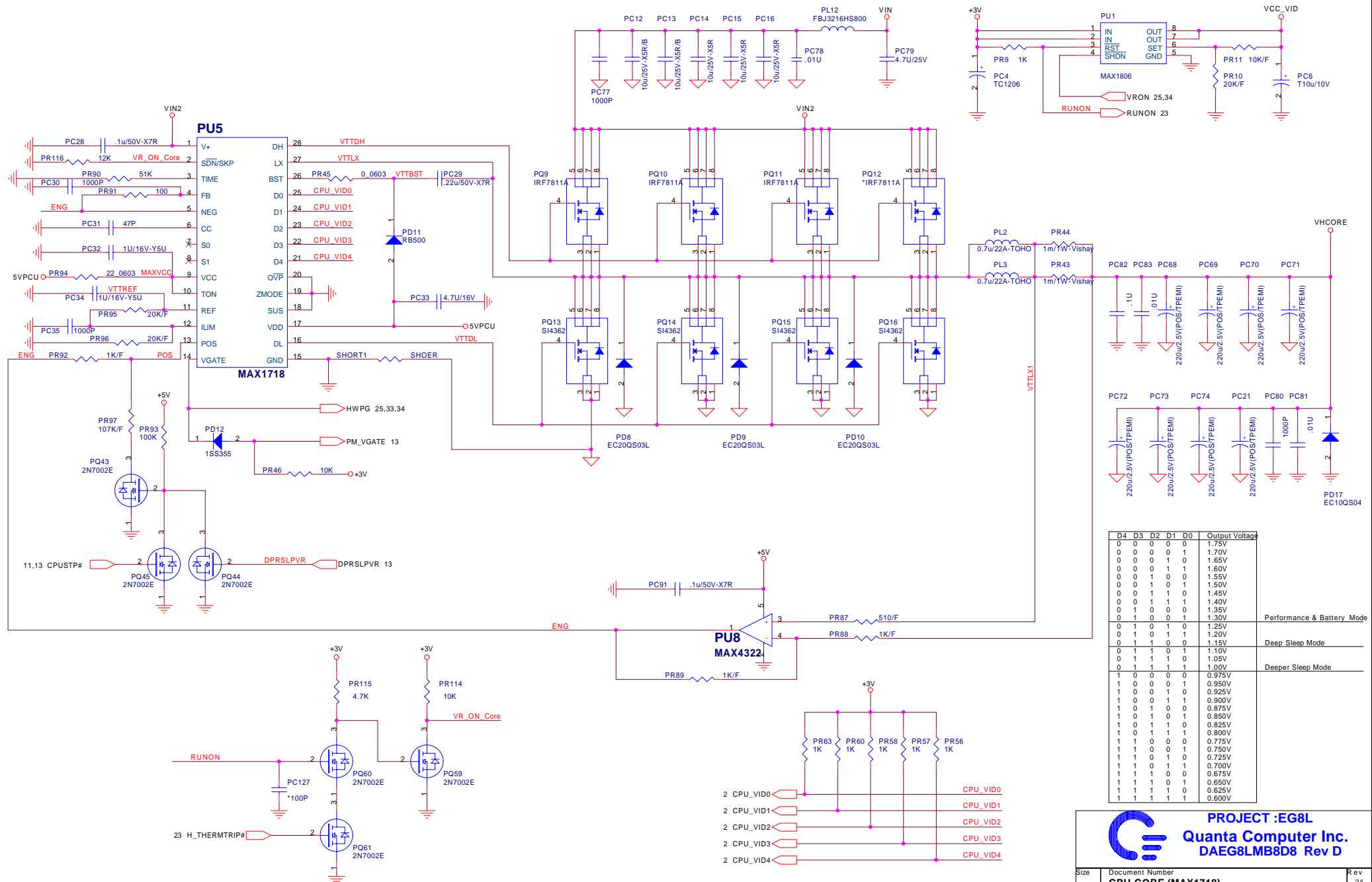
LPT CONN.



PORT REPLICATOR (152 Pin)

31



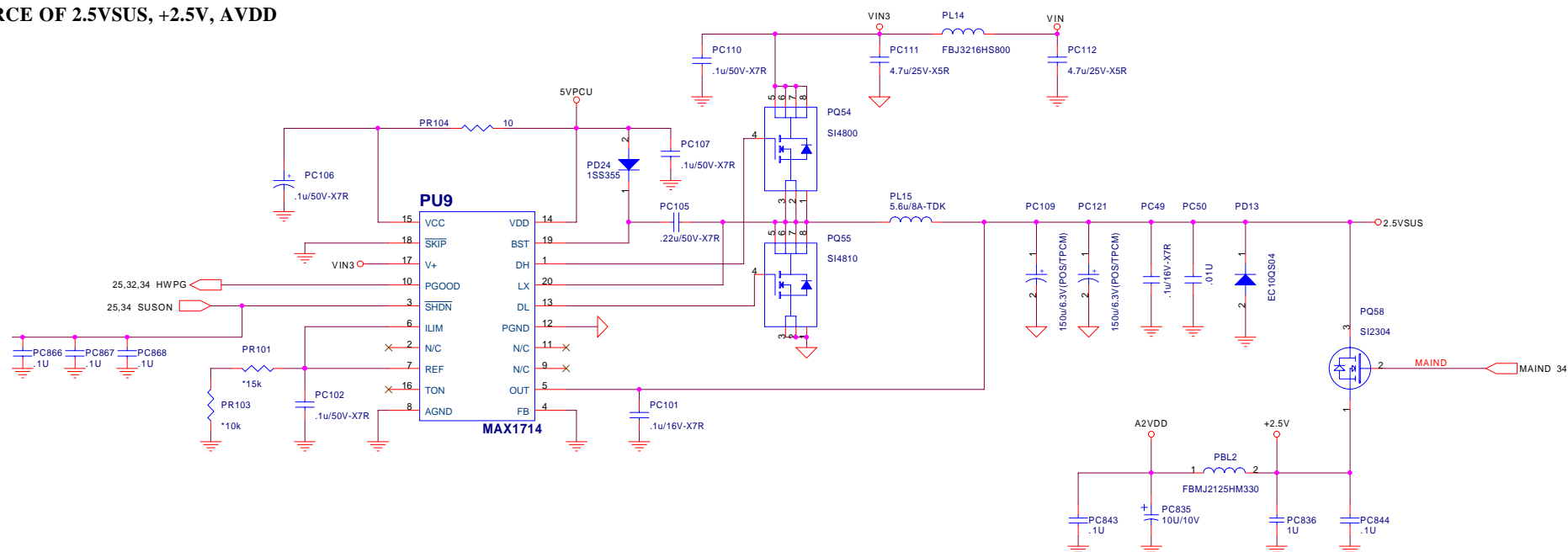


PROJECT :EG8L

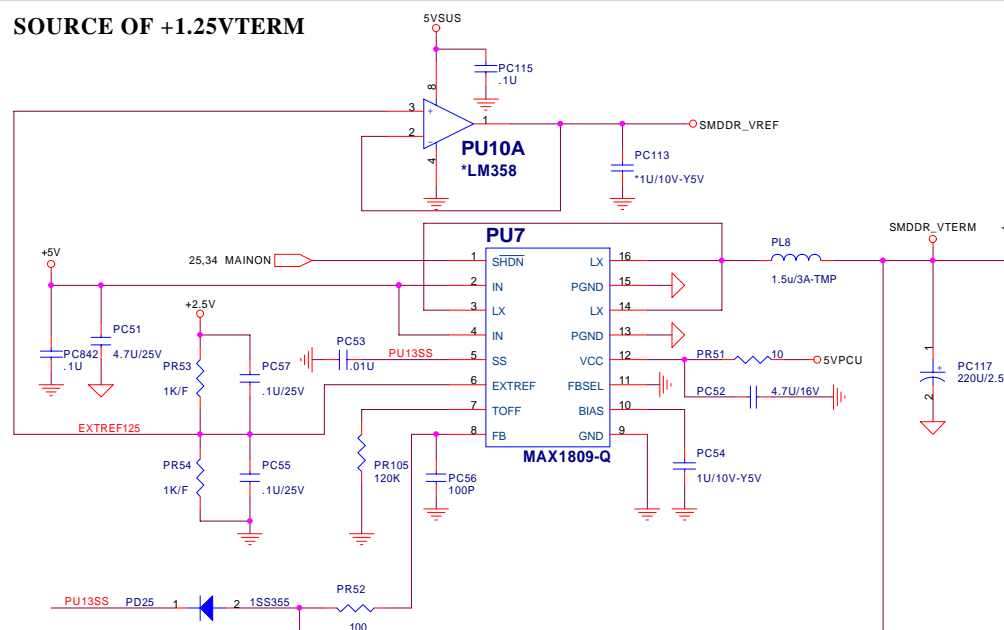
Quanta Computer Inc.
DAEG8LMB8D8 Rev D

Size	Document Number	Rev
	CPU CORE (MAX1718)	2A
Date:	Friday, December 27, 2002	Sheet 32 of 36

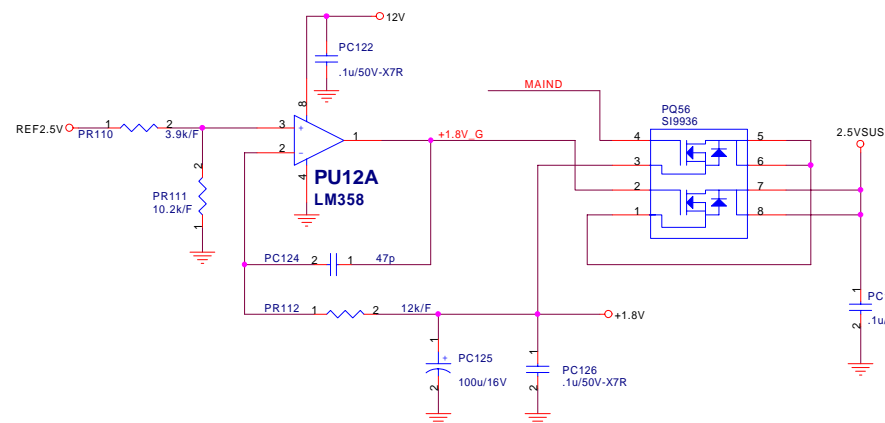
SOURCE OF 2.5VSUS, +2.5V, AVDD



SOURCE OF +1.25VTERM



SOURCE OF 1.8V

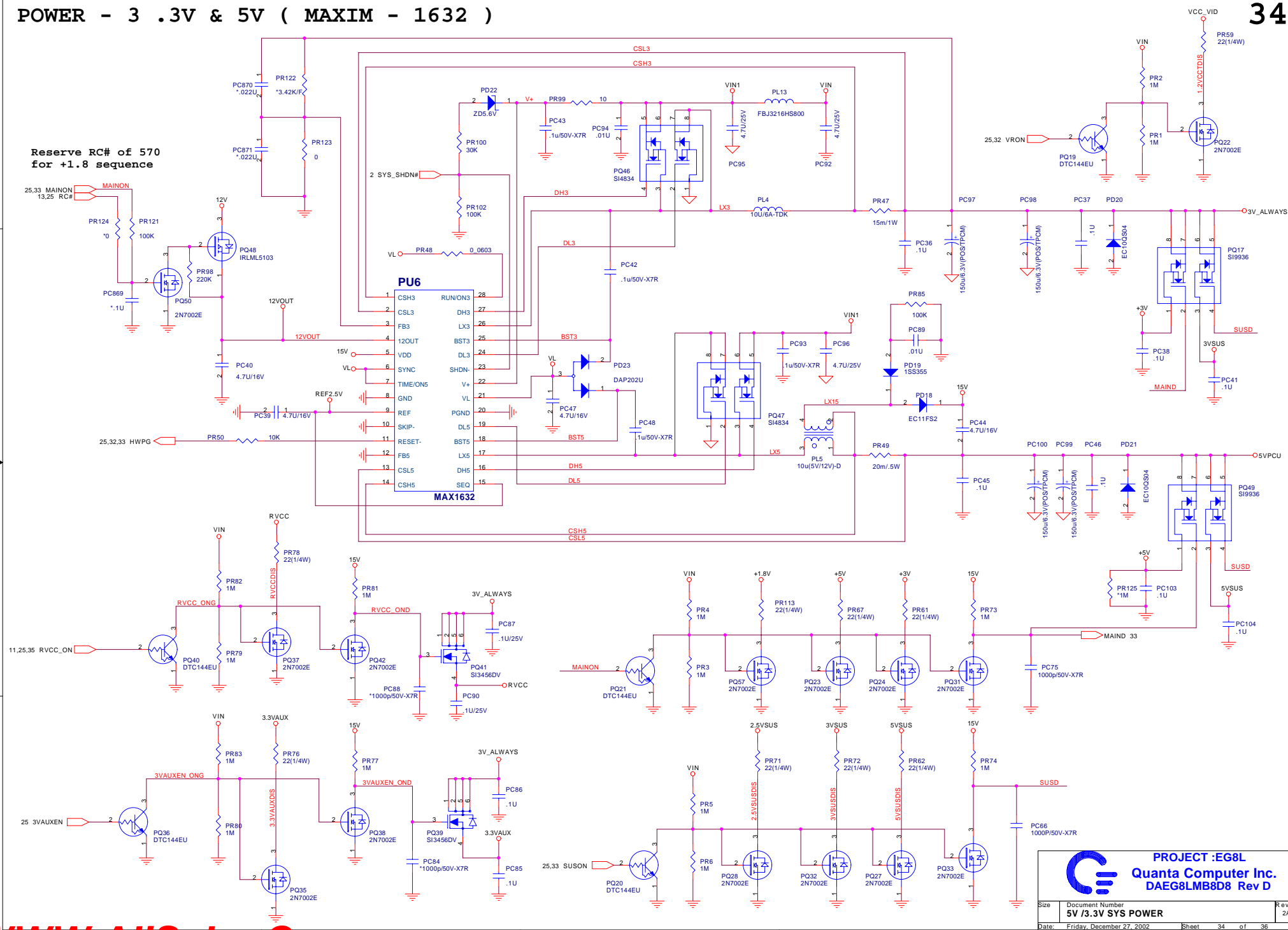


PROJECT :EG8L
Quanta Computer Inc.
DAEG8LMB8D8 Rev D

Size	Document Number	Rev
	1.25VDDR,2.5V(MAX1714)	2A
Date:	Friday, December 27, 2002	Sheet 33 of 36

POWER - 3 .3V & 5V (MAXIM - 1632)

34



35

